



1330 76th Ave SW • Cedar Rapids, IA • 52404-7052
Ph: 319/363-8281 • Fax: 319/286-3351
www.NewLeader.com

Dear Customer:

On behalf of Highway Equipment Company, now doing business as New Leader Manufacturing, we want to thank you for your purchase of your New Leader® equipment.

You are now eligible for our **FREE EXTENDED WARRANTY PROGRAM** provided your dealer completes and returns the DELIVERY & EXTENDED WARRANTY FORM to New Leader Manufacturing within 30 days of delivery.

When your dealer submits the DELIVERY & EXTENDED WARRANTY FORM online, not only will you receive our BASIC (6) six-month genuine parts only warranty; you will also receive, at no charge, an additional (18) eighteen months for a total of (24) twenty-four months of warranty for parts.

As an added bonus for getting the DELIVERY & EXTENDED WARRANTY FORM to New Leader Manufacturing within 30 days of delivery, we will also extend labor coverage at our standard dealer labor reimbursement rate for a period of (24) twenty-four months. Contact your dealer to register and complete the DELIVERY & EXTENDED WARRANTY FORM online at <http://legacy-newleader.highwayequipment.com>.

Thank you for your purchase.

FREE Extended Warranty Program

- 30 days to turn in DELIVERY & EXTENDED WARRANTY FORM
- 24 months on genuine parts
- 24 months labor

This pre-delivery checklist is provided to identify the items checked and, if necessary, adjusted by the dealer prior to delivery of this machine.

CHECK THE FOLLOWING AND ADJUST IF NECESSARY:

Before starting engine/Before starting machine operation

- | | |
|---|--|
| <input type="checkbox"/> Battery condition and connection | <input type="checkbox"/> Center divider in frame |
| <input type="checkbox"/> Electrical connections | <input type="checkbox"/> Safety shields in place |
| <input type="checkbox"/> Hydraulic oil level and line connections | <input type="checkbox"/> All fasteners secure |
| <input type="checkbox"/> Gear case oil level (right and/or left) | <input type="checkbox"/> Chain tension and sprocket alignments |
| <input type="checkbox"/> Lubricate all grease fittings | <input type="checkbox"/> Center spinner frame assembly |
| <input type="checkbox"/> Frame mounts adjusted properly | <input type="checkbox"/> Tighten set screw in divider adjuster |

Start chassis/Start run to operation temperature

- | | |
|---|---|
| <input type="checkbox"/> All gauges operating correctly | <input type="checkbox"/> Hydraulic fittings tight no leaks |
| <input type="checkbox"/> Engine RPM (operating speed) | <input type="checkbox"/> Flow control valve operation |
| <input type="checkbox"/> Check operation of all alarms | <input type="checkbox"/> Calibrate processor |
| <input type="checkbox"/> Check operation of monitor and display | <input type="checkbox"/> Test-drive, verify calibration |
| <input type="checkbox"/> Hydraulic system functions | <input type="checkbox"/> Test manual operation of conveyor & spinners |
| <input type="checkbox"/> Pump flow @ OERPM is ____ GPM | <input type="checkbox"/> Check belt alignment and chain tension |

Stop operation/Turn off engine, engage parking brake

- | | |
|---|--|
| <input type="checkbox"/> Visual check for leaks | <input type="checkbox"/> All oil levels full |
|---|--|

Inspection performed by: Dealer Signature _____ Date _____

Reviewed the following with the owner:

- | | | | |
|--|---|----------------------------------|-----------------------------------|
| <input type="checkbox"/> Operations manual | <input type="checkbox"/> Safety precautions | <input type="checkbox"/> Storage | <input type="checkbox"/> Warranty |
|--|---|----------------------------------|-----------------------------------|

Customer Signature _____ Date _____

**F
R
E

E

E

X
T
E
N
D
E
D

W
A
R
R
A
N
T
Y**



1330 76TH Ave SW
Cedar Rapids, IA 52404-7052
Phone: (800) 363-1771
www.NewLeader.com

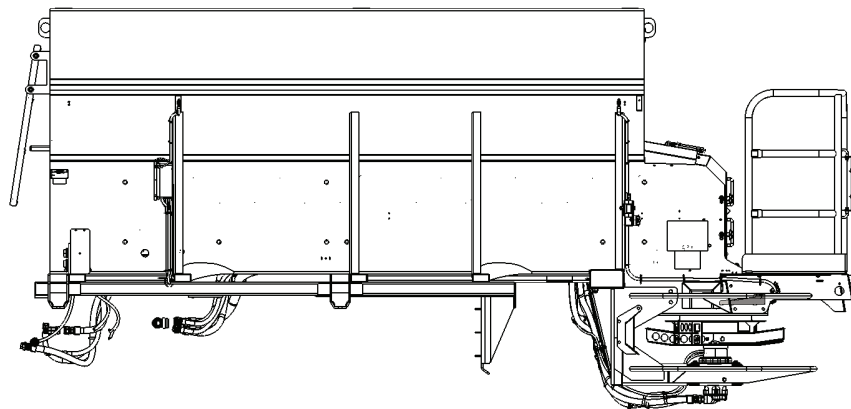
NL720 CNH Trident 5550 Dry High Flow

Parts Manual

Unit Serial No. _____

Manual Number: 323040-B

Effective: 12/2025



Serious injury or death can result from the failure to read, understand, and follow instructions provided in the spreader operator's manual. Before using this equipment, read, understand and follow all instructions in the spreader operator's manual as well as the chassis operator's manual supplied by your chassis manufacturer.

NEW LEADER LIMITED WARRANTY

BASIC WARRANTY

HIGHWAY EQUIPMENT COMPANY d/b/a NEW LEADER MANUFACTURING ("Highway") has manufactured or is distributing the Product/Genuine Parts to which this warranty is attached, and warrants to its original reseller including Dealers, Distributors and Original Equipment Manufacturers (hereafter called Dealer) that the Product/Genuine Parts will, under normal conditions of use and service, be free from material defects due to faulty manufacturing for a period of six (6) months from the date of delivery to the original user. For any Product/Genuine Part that does not conform to the aforesaid warranty within six (6) months from the date of delivery to the original user, your Dealer will, at its option, repair or replace parts. Labor costs for this basic warranty coverage will be paid by Highway to the Dealer at their standard shop rate, based on the amount of time Highway establishes to be the time reasonably necessary to make required repairs. If the Product/Genuine Part is defective in materials or workmanship, you must promptly notify your Dealer; and complete the warranty registration by utilizing the internet at <http://dealer.highwayequipment.com> for such Product before the expiration of the warranty period (Genuine Parts do not require a warranty registration but may require proof of purchase). If your Dealer determines that the defect is due to Highway's material or workmanship, your Dealer will, with Highway's consent, repair such defect during normal working hours, at their location, or such other location as the Dealer may designate. The installation of any part that did not originate from Highway will void this Basic Warranty in its entirety. In the event of repair or replacement, the warranty period shall not be extended beyond the original warranty period. In the case of a demonstration or rental machine (Demo), the warranty will begin at the date of delivery to the original user. If the Demo is sold within the first 120 days of the demo or rental period, the warranty will re-start to the date it is delivered to the end user. If the Demo is sold after the 120th day, the warranty will remain at the date of original delivery to the original user.

NEW LEADER EXTENDED WARRANTY

In lieu of the basic warranty described above, if the warranty registration (or warranty information as provided above) is received at Highway within thirty (30) days after the date of delivery to the original user, Highway will warrant that the Product will, under normal conditions of use and service, be free from material defects due to faulty manufacturing for a period of twenty-four (24) months from the date of delivery to the original user. For any Product that does not conform to the aforesaid warranty within twenty-four (24) months from the date of delivery, your Dealer will, at its option, send you a new part, or give you full credit for the part, provided the replacement part is purchased through your Dealer. Labor costs for this extended warranty coverage will be paid by Highway to the Dealer at their standard shop rate, based on the amount of time Highway establishes to be the time reasonably necessary to make required repairs. If the Product is defective in materials or workmanship, you must promptly notify your Dealer before the expiration of the warranty period. If your Dealer determines that the defect is due to Highway's material or workmanship, your Dealer will, with Highway's consent, repair such defect during normal working hours, at their location, or such other location as your Dealer may designate. In the event of repair or replacement, the warranty period shall not be extended beyond the original warranty period. In the case of a Demo, the warranty will begin at the date of delivery to the original user provided the machine is registered with Highway within 30 days. If the Demo is sold within the first 120 days of the demo or rental period and the machine is registered with Highway within 30 days of the sale, the extended warranty will re-start to the date it is delivered to the end user. If the Demo is sold after the 120th day and is registered with Highway within 30 days of the sale, the extended warranty will remain at the date of original delivery to the original user.

Genuine Parts are covered by the Basic Warranty and are not eligible for the Extended Warranty.

If you fail to complete the warranty registration (or warranty information as provided above) to Highway within thirty (30) days after the date of delivery, the extended warranty shall not apply, and your sole remedy for any defects in the Product shall be under the basic warranty described above. This includes all demo or rental machines.

The above warranties do not cover:

- (1) Product that is damaged by abuse, neglect, accident, or modification;
- (2) fluids, towing, telephone, travel and cleaning cost;
- (3) loss of use of vehicle, inconvenience, commercial loss, or consequential damages;
- (4) any combustion engine; or
- (5) the Product itself if parts are installed on the Product that did not originate from Highway.
- (6) Labor for Genuine Parts

The above warranties do not apply under the following conditions:

- (1) when Product has been improperly used or installed, or modified, or fitted with sideboards, or fails because of defects or inefficiency of components not furnished with the Product;
- (2) **when Product is used for purposes for which it was not originally designed or intended;**
- (3) when Product is used under abnormal operating conditions; or
- (4) when the dealer or user fails to follow Highway instructions regarding the Product, including the instruction to install only Highway supplied parts onto the Product.

HIGHWAY WILL BEAR NO OTHER EXPENSE, INCLUDING BUT NOT LIMITED TO LABOR AND MATERIAL COSTS (OTHER THAN THOSE SPECIFIED HEREIN) OF ANY KIND, AND YOUR EXCLUSIVE REMEDY, IN LIEU OF ALL INCIDENTAL, SPECIAL, CONSEQUENTIAL OR ANY OTHER DAMAGES, INCLUDING, BUT NOT LIMITED TO, DAMAGES FOR NEGLIGENCE, IS LIMITED TO REPAIR OR REPLACEMENT AS HERETOFORE DESCRIBED. THE FOREGOING WARRANTIES ARE IN LIEU OF ALL OTHER REPRESENTATIONS OR WARRANTIES, EXPRESS OR IMPLIED OF ANY KIND REGARDING ANY PRODUCT, INCLUDING BUT NOT LIMITED TO THE IMPLIED WARRANTIES OF MERCHANTABILITY AND FITNESS FOR A PARTICULAR PURPOSE OR USE. IN NO CASE SHALL HIGHWAY BE LIABLE FOR ANY SPECIAL, INCIDENTAL OR CONSEQUENTIAL DAMAGES BASED UPON BREACH OF WARRANTY, BREACH OF CONTRACT, NEGLIGENCE, STRICT TORT, OR ANY OTHER LEGAL THEORY.

Unless modified in writing, signed by both parties, this Limited Warranty is understood to be the complete and exclusive agreement between the parties, superseding all prior agreements, oral or written, and all other communications between the parties relating to the subject matter of this Limited Warranty. No representative or agent of Highway, nor any third party has authority to change or modify this warranty in any respect, nor to assume any other obligation or liability on behalf of Highway. Any action for breach of warranty must be commenced within six (6) months following the expiration of the Limited Warranty.

These warranties are extended only to the original Dealer and are not transferable. In the event of a warranty claim, you should promptly notify your Dealer and provide the following:

1. Model and serial number of the Product;
2. Date of delivery to the original user;
3. Part number of the defective part;
4. Description of the difficulty encountered;
5. Date of repair.

Highway will work with your Dealer regarding instructions for repair, replacement, or refund, if the warranty claim can be validated.

Effective with Product delivered to original user on or after August 25, 2014.

Table of Contents

Warranty	2	14' Conveyor Group	31
Table of Contents	3	Main	31
Ordering Parts: Instructions.....	4	Conveyor Cartridges	33
Body.....	5	Conveyor Gear Cases	35
Sight Window	5	Gear Case Assy - LH.....	35
Mounting Pads	5	Gear Case Assy - RH	35
Platform.....	7	Gear Case Service Parts.....	36
Platform Assembly.....	8	Drive Shaft.....	37
Screens.....	10	Tail Pulley	38
Sign – Slow-Moving Vehicle (SMV) & Speed		Spinners	40
Identification Symbol (SIS).....	17	Spinner Assembly	40
Deflectors	17	Spinner Motor	44
SMV Group	18	Electrical	45
Waterfalls	18	Harnesses and Sensors.....	45
Chutes.....	20	Decals	48
Hydraulics - 14'	14	Safety.....	49
Spinner Hydraulics	20	Decor Group	48
Spinner Control Valve Assembly	23	Calibration.....	51
Conveyor Hydraulics	24	Spread Pattern Test Kit	51
Conveyor Control Valve Assembly	26	Calibration Chutes	52
Case Drain Group	27	Calibration Test Kit	52
Case Drain Mounting Assembly	30		
		Light Harness Group	15
		PDC/ISO- Group	16

NOTE: The information contained within this manual was current at the time it was published. Some information is subject to change to ensure the best performance of the unit. New Leader Manufacturing reserves the right to make changes in materials or design of the product and its manual at any time without notice.

Check with your Authorized Dealer or call our New Leader Manufacturing (NLM) Product Sales and Support Department at 1-888-363-8006 for the latest version of the manual.



® Order from an **AUTHORIZED DEALER** in your area.

Ordering Parts: Instructions

When ordering, please always provide the following:

1. The pertinent model and serial number
2. Part name(s), part number(s) and the quantity required
3. The shipping address
4. The preferred carrier, if applicable

Unless claims for shortages or errors are made immediately upon receipt of goods they will not be considered. Any part returns should be directed through the dealer from which they were purchased.

When broken goods are received, a full description of the damage should be made by the carrier agent on the freight bill. If this description is insisted upon, full damage can be collected from the transportation company.

No responsibility is assumed for delay or damage to merchandise while in transit. Our responsibility ceases upon delivery of shipment to the transportation company from whom a receipt is received showing that shipment was in good condition when delivered to them, therefore, claims (if any) should be filed with the transportation company and not with New Leader Manufacturing.

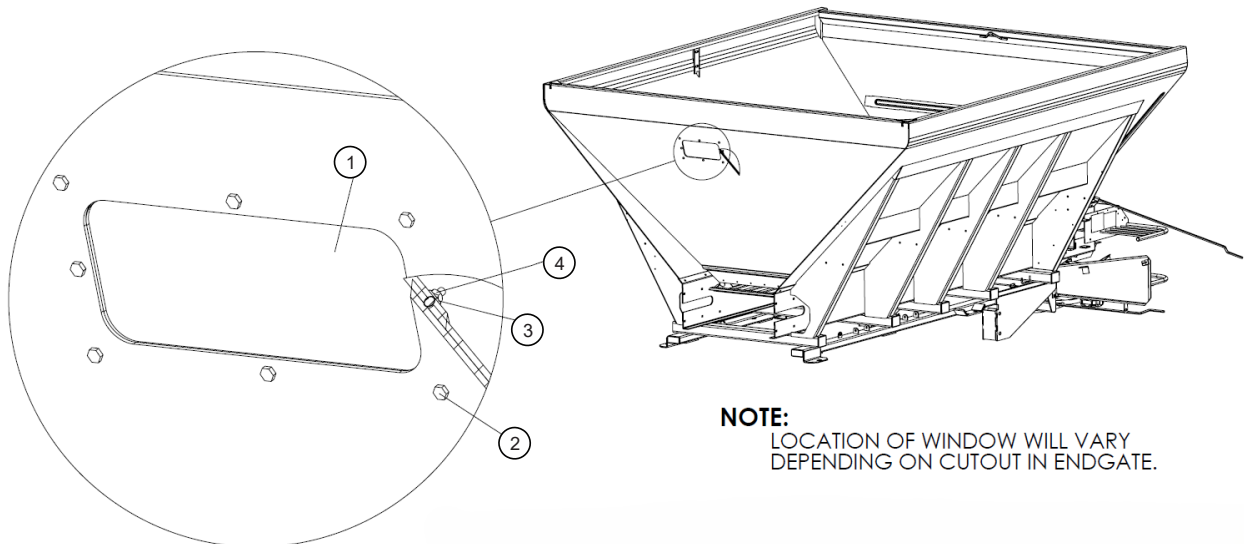
If your claims are not being handled (by the transportation company) to your satisfaction, please call our Product Sales & Support Department at New Leader Manufacturing at (800) 363-1771 for assistance.

In the parts list the following symbols and abbreviations stand for:

- * - Not Shown
- AR – As Required
- CS – Carbon Steel
- SS – Stainless Steel
- NS – Not Serviced

The parts listed under the different steel types (CS, 409 SS and 304 SS) are for that type of unit and do not necessarily mean the part is made of that type of steel.

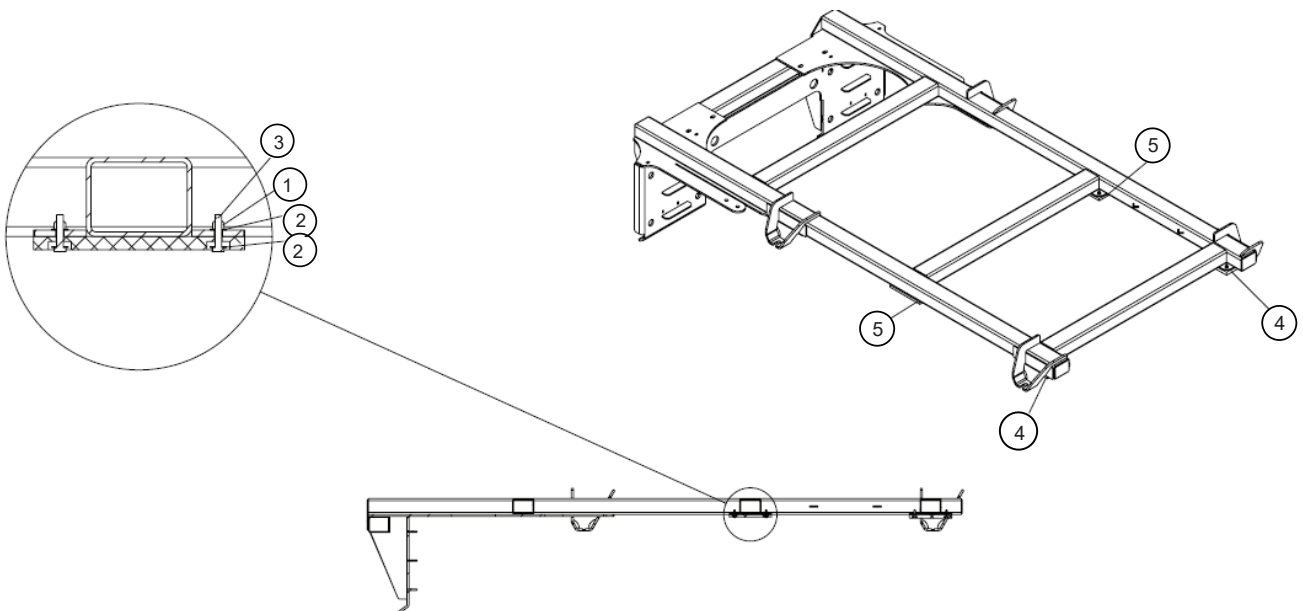
Body Sight Window



NOTE:
LOCATION OF WINDOW WILL VARY
DEPENDING ON CUTOUT IN ENDGATE.

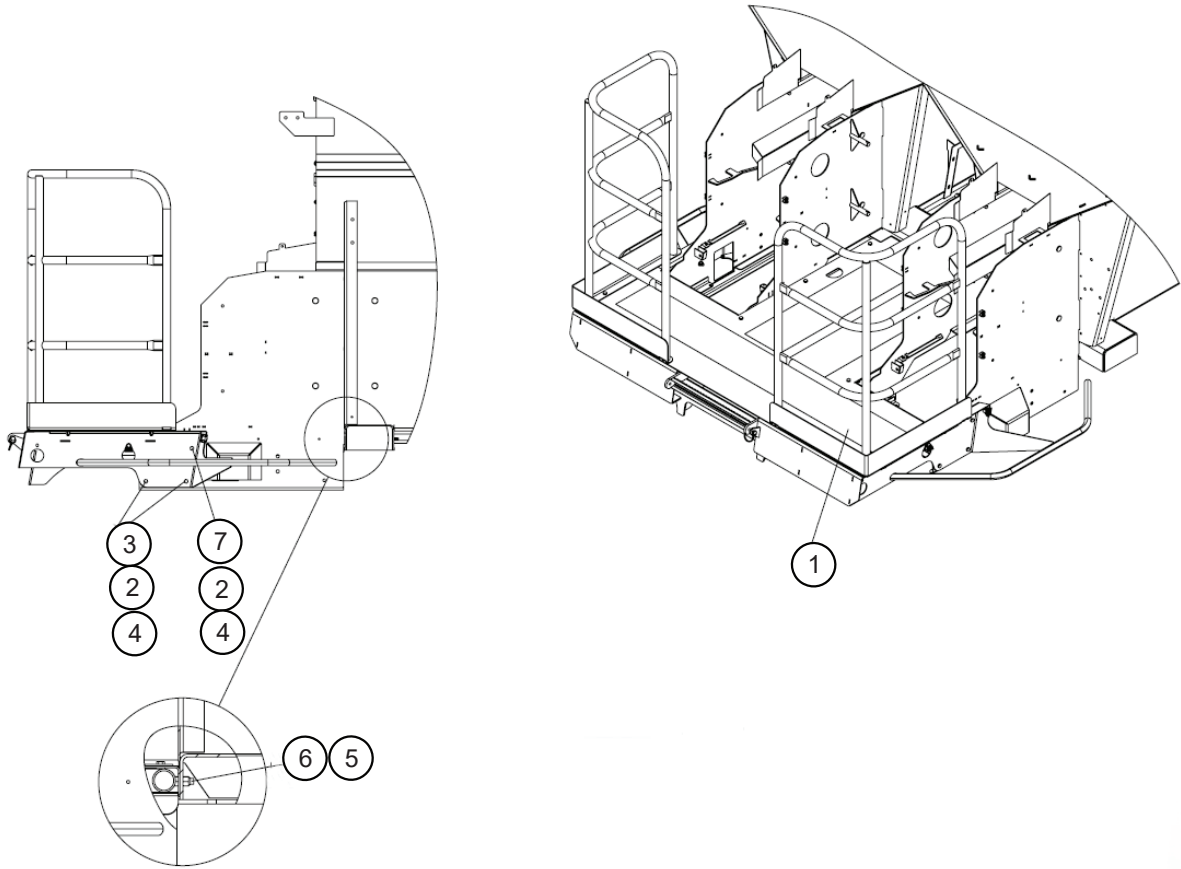
Key	NLM	Description	Qty	Key	NLM	Description	Qty
1	302686	Window - Sight 5X12 Plexiglas	2	3	36423	Washer - .25 SS Flat	16
2	36395	Capscrew - .25-20NC X 1 SS	16	4	42034	Nut - .25-20NC SS Lock	16

Mounting Pads



Key	NLM	Description	Qty	Key	NLM	Description	Qty
1	323590	Pad - Mount .75 x 5.5 x 10 Poly	10	3	36423	Washer - .25 SS Flat	40
2	40750	Capscrew - .25-20NC x 1.25 SS	20	4	42034	Nut - .25-20 NC SS Lock	20
				5	313644	Pad - .498 X 6 X 8 Poly	2

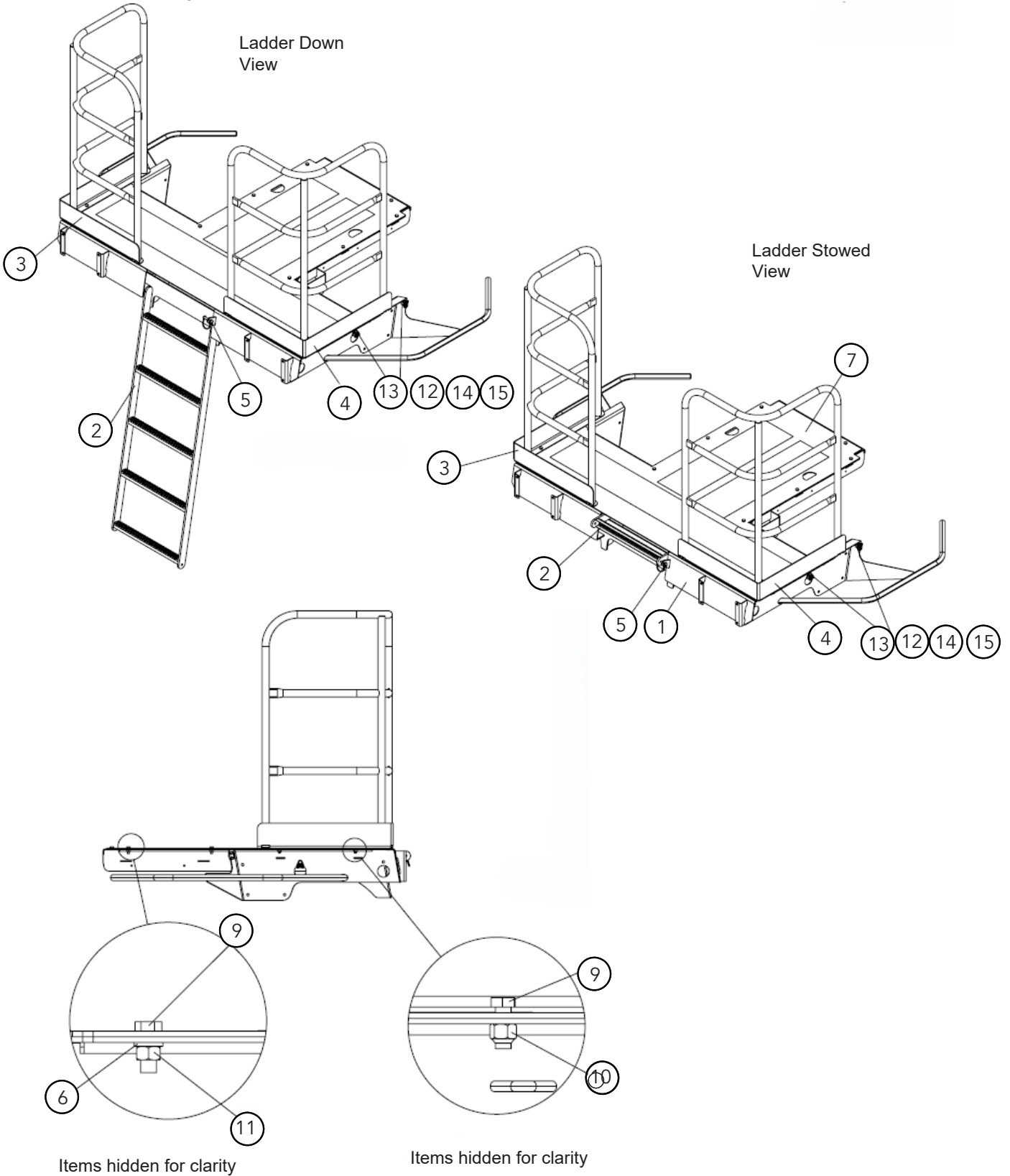
Platform



Key	NLM	Description	Qty
1	322759	Platform - Assy 304	1
2	36425	Washer - Flat .375 SS	14
3	36399	Capscrew - .375-16NC x 1.25 SS	4
4	72054	Nut - Lock .375-16NC SS	10

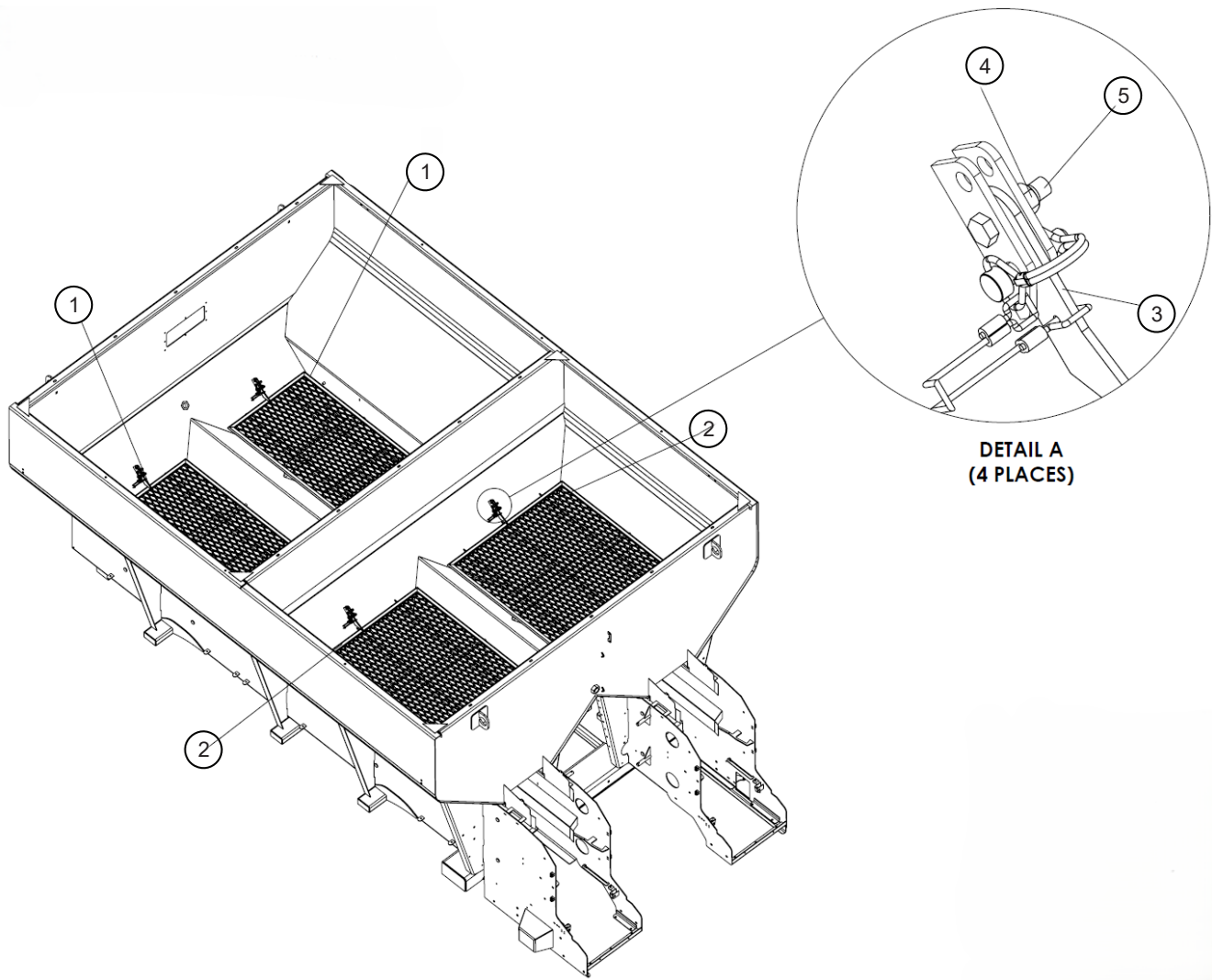
Key	NLM	Description	Qty
5	39016	Nut - Lock .5-13NC SS	2
6	36402	Capscrew -.5-13NC X 1.25 SS	2
7	36402	Capscrew - .375-16NC X 1 SS	6

Platform Assembly



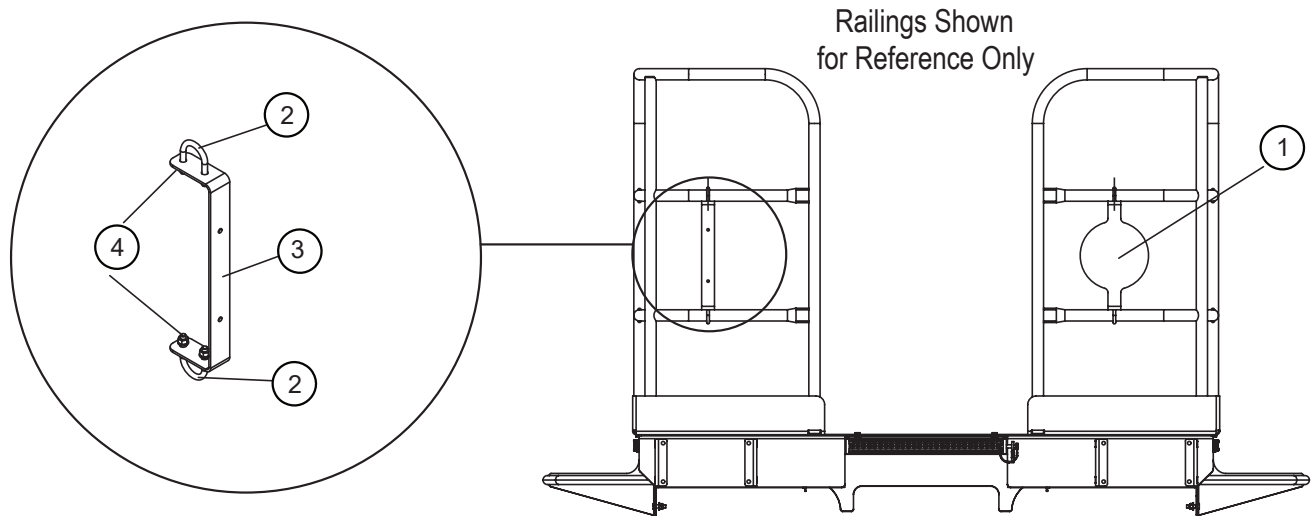
Key	Part No.	Description	Qty
	322759	Platform - Assy 304	1
1	322767	Platform - Wldmt 304	1
2	321467	Ladder - Wldmt 18 304	1
3	322760	Railing - Wldmt LH 304	1
4	322764	Railing - Wldmt RH 304	1
5	311732	Pin - Lock .375 X 1.375 SS	1
6	36420	Nut - .375-16NC SS Lock	6
7	322788	Panel - Top 304	1
8	*21699	*Skid Fabric - 8" X (per foot) *Not Shown*	10
9	36398	Capscrew - .375-16NC X 1 SS	16
10	72054	Nut - Lock .375-16NC SS	10
11	36414	Nut - Hex .375-16NC SS	6
12	312964	Clip - Harness Mounting	4
13	300458	Capscrew - .313-18NC X .875 SS	4
14	36424	Washer - Flat .313 SS	4
15	42221	Nut - Lock .313-18NC SS	4

Screens



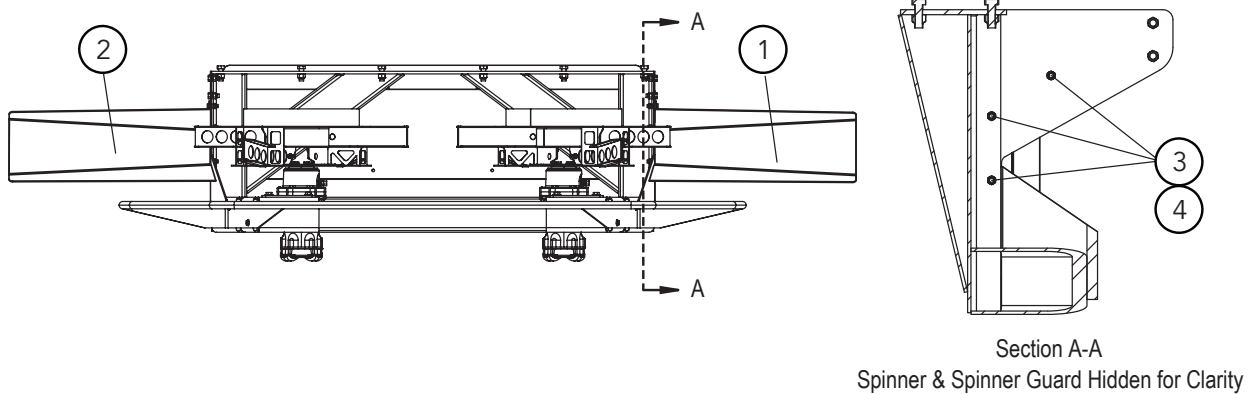
Key	NLM	Description	Qty
1	324663	Screen - 24.22 X 63.28 304	2
2	324809	Screen - 36.19 X 52.26 304	2
3	324894	Latch - Assy Screen 304	4
4	72054	Nut - Lock .375-16NC SS	4
5	34858	Capscrew - .375-16NC X 1.5 SS	4

Sign – Slow-Moving Vehicle (SMV) & Speed Identification Symbol (SIS)

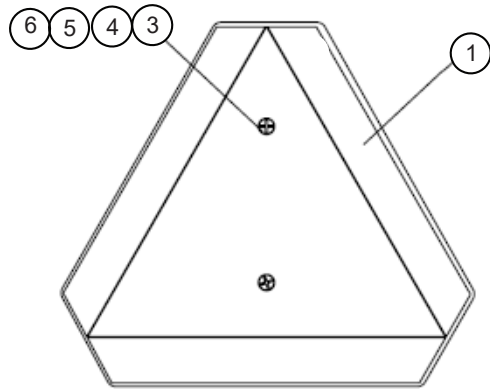


Key	Part No.	Description	Qty	Key	Part No.	Description	Qty
1	321936	Mount - SIS Railing 304	1	3	321946	Mount - SMV Railing 304	1
2	321937	Bolt - .31-18 X 1.375ID 304	4	4	36419	Washer - .313 SS Lock	8

Deflectors

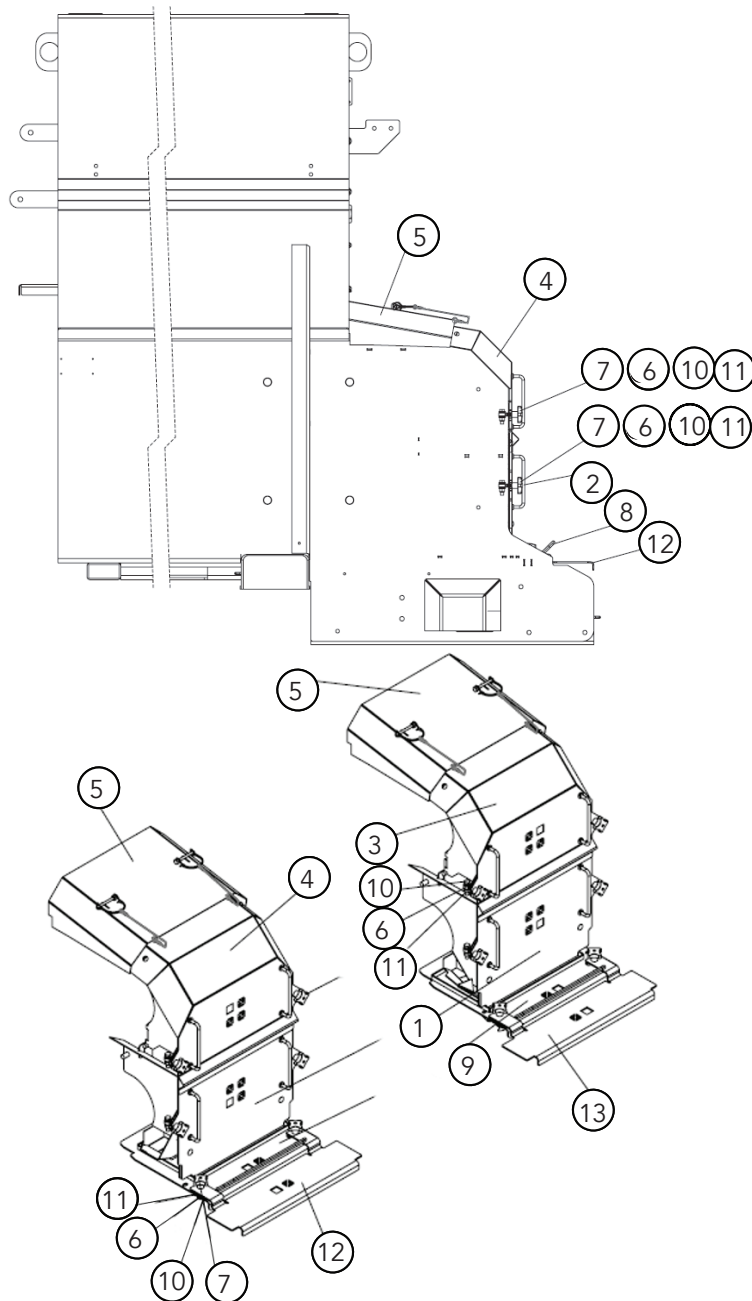


Key	Part No.	Description	Qty	Key	Part No.	Description	Qty
1	321441	Deflector - Wldmt RH 304	1	3	36399	Capscrew - .375-16NC X 1.25 SS	6
2	321437	Deflector - Wldmt LH 304	1	4	72054	Nut - .375-16NC SS Lock	6

SMV - Group

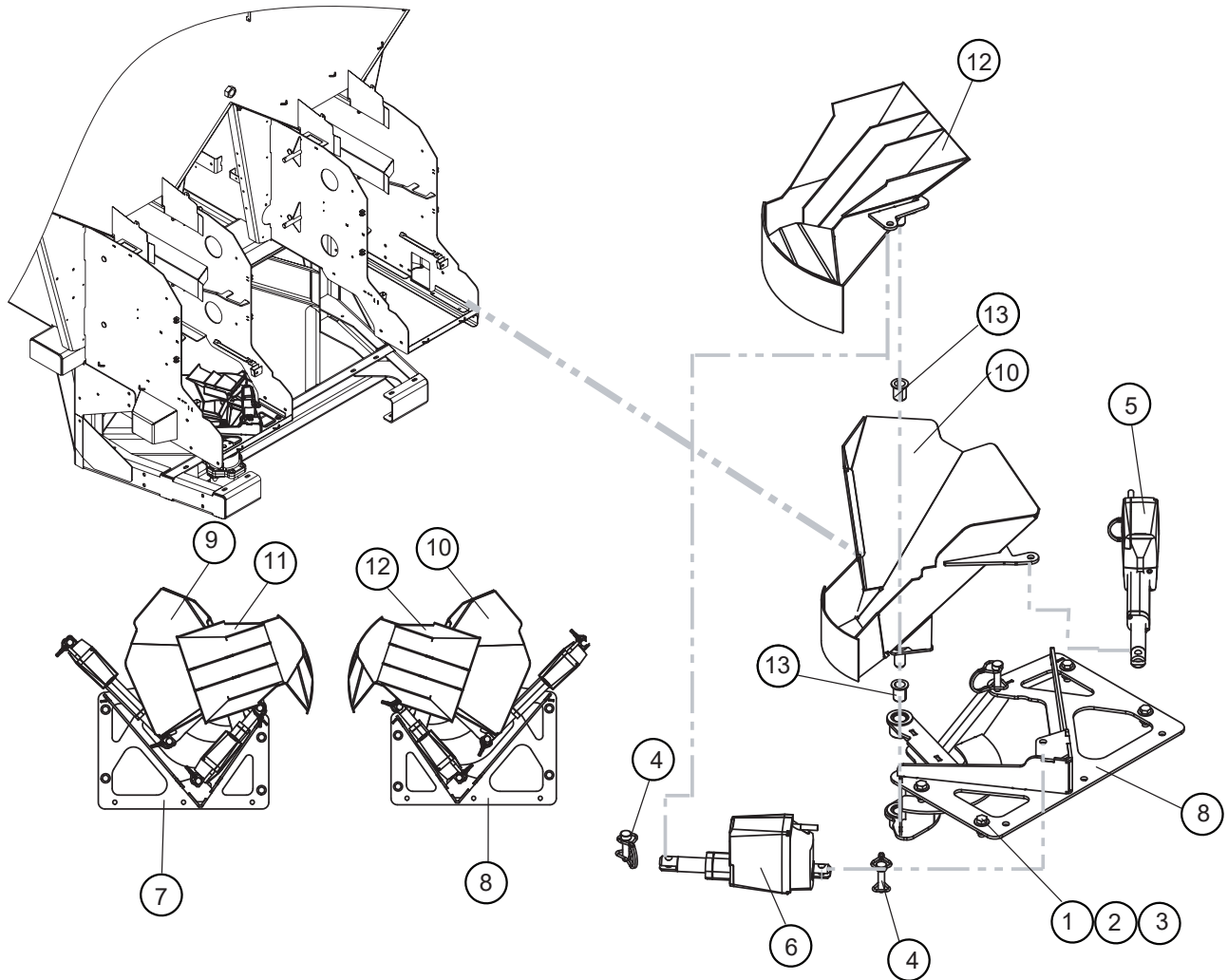
Key	NLM	Description	Qty
1	305229	Sign - S.M.V.	1
2	313926	Decal - 40 MILE/H	1
3	36418	Washer - Lock .25 SS	2
4	36412	Nut - Hex .25-20NC SS	2
5	32446	Screw - Truss Head .25-20NC X .75	2
6	36423	Washer - Flat .25 SS	2

Waterfalls



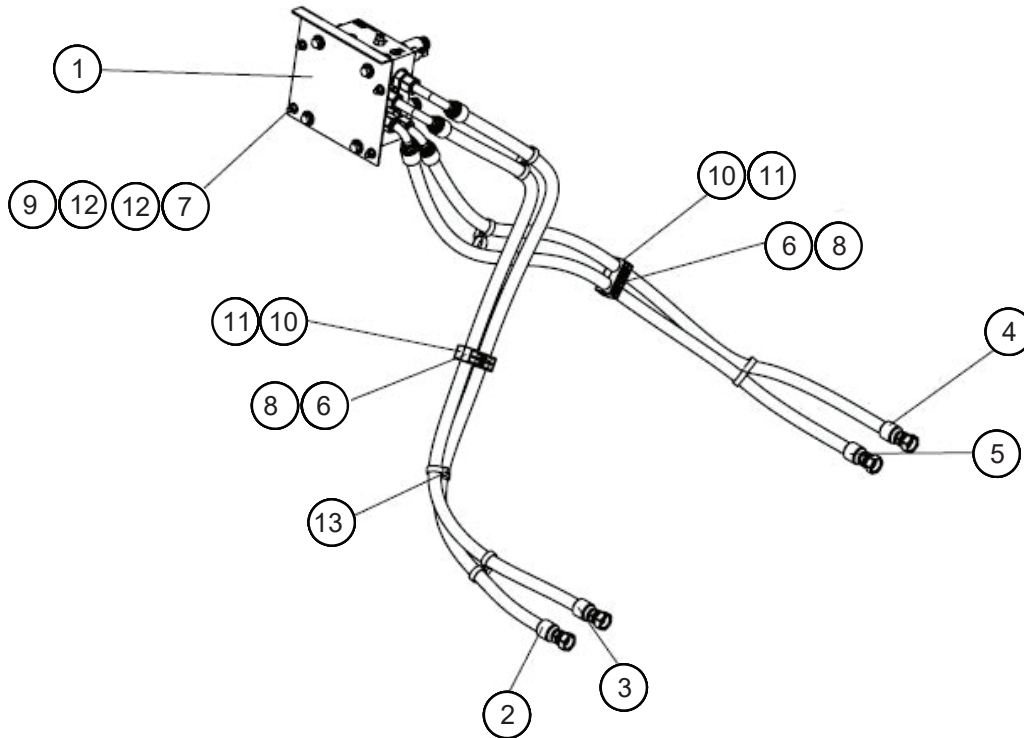
Key	Part No.	Description	Qty	Key	Part No.	Description	Qty
1	321561	Waterfall - Wldmt Bottom RH	1	7	321740	Knob - Tie Down 304	12
2	321563	Waterfall - Wldmt Bottom LH	1	8	321778	Chute - Wldmt Upper LH 304	1
3	321560	Waterfall - Wldmt Top RH 304	1	9	321779	Chute - Wldmt Upper RH 304	1
4	321562	Waterfall - Wldmt Top LH 304	1	10	34858	Capscrew - .375-16NC X 1.5 SS	12
5	321727	Cover - Assy Conv Waterfall	2	11	72054	Nut - .375-16NC SS Lock	12
6	321739	Eye Bolt - Tie Down 304	12	12	324368	Platform - Guard LH	1
				13	324369	Platform - Guard RH	1

Chutes

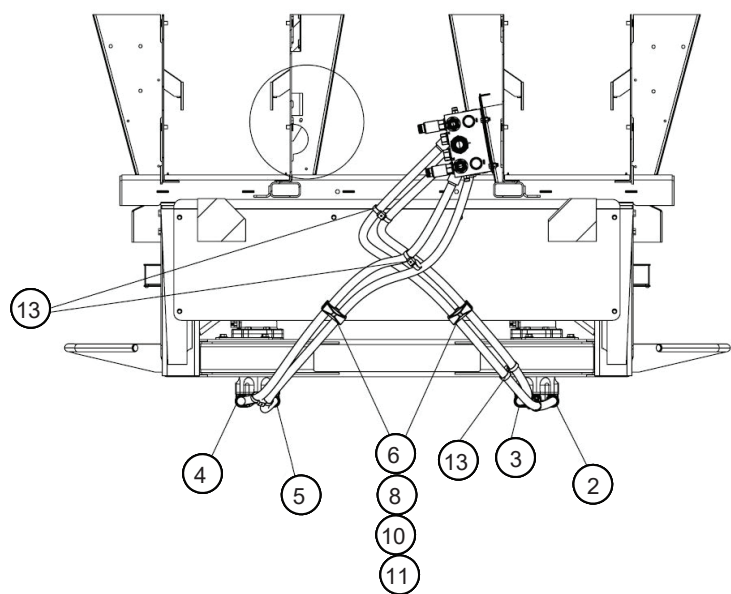


Key	Part No.	Description	Qty	Key	Part No.	Description	Qty
1	36398	Capscrew - .375-16NC X 1 SS	8	7	322287	Chute - Wldmt Mount Lower LH	1
2	36425	Washer - .375 SS Flat	8	8	322286	Chute - Wldmt Mount Lower RH	1
3	72054	Nut - .375-16NC SS Lock	8	9	322447	Chute - Wldmt Inner LH 304	1
4	322464	Pin - Lock .375 X 1.125 SS	8	10	322446	Chute - Wldmt Inner RH 304	1
5	320881	Actuator - 150mm (with harness)	2	11	321667	Chute - Wldmt Outer LH 304	1
6	320882	Actuator - 75mm (with harness)	2	12	321676	Chute - Wldmt Outer RH 304	1
				13	321733	Bearing - Flange .625 X 1.0	4

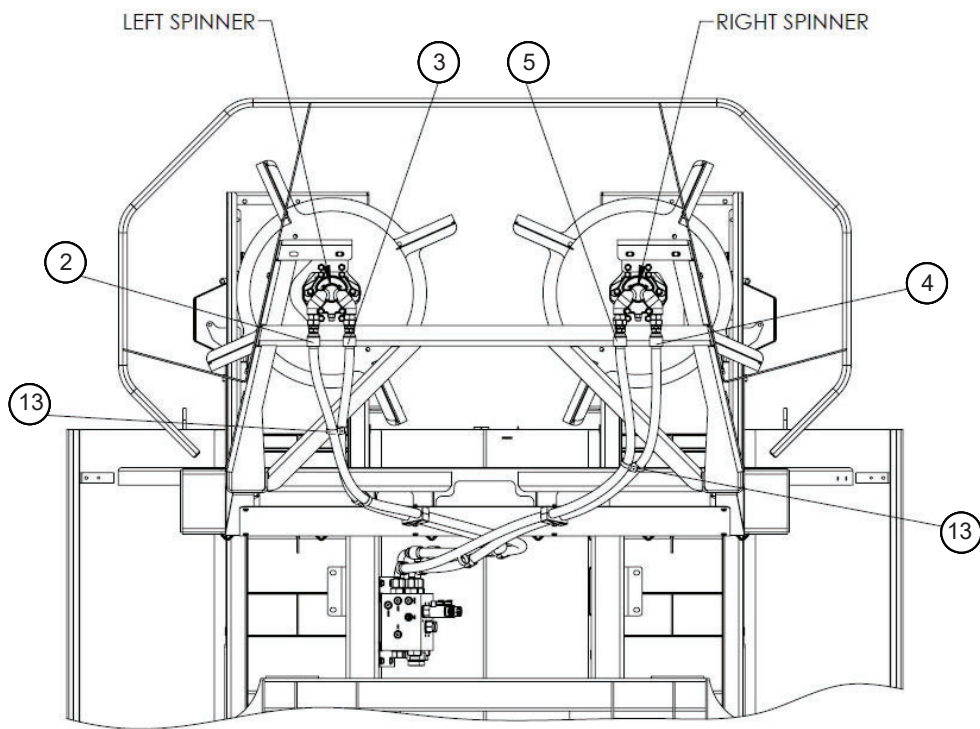
Hydraulics 12' Group Spinners

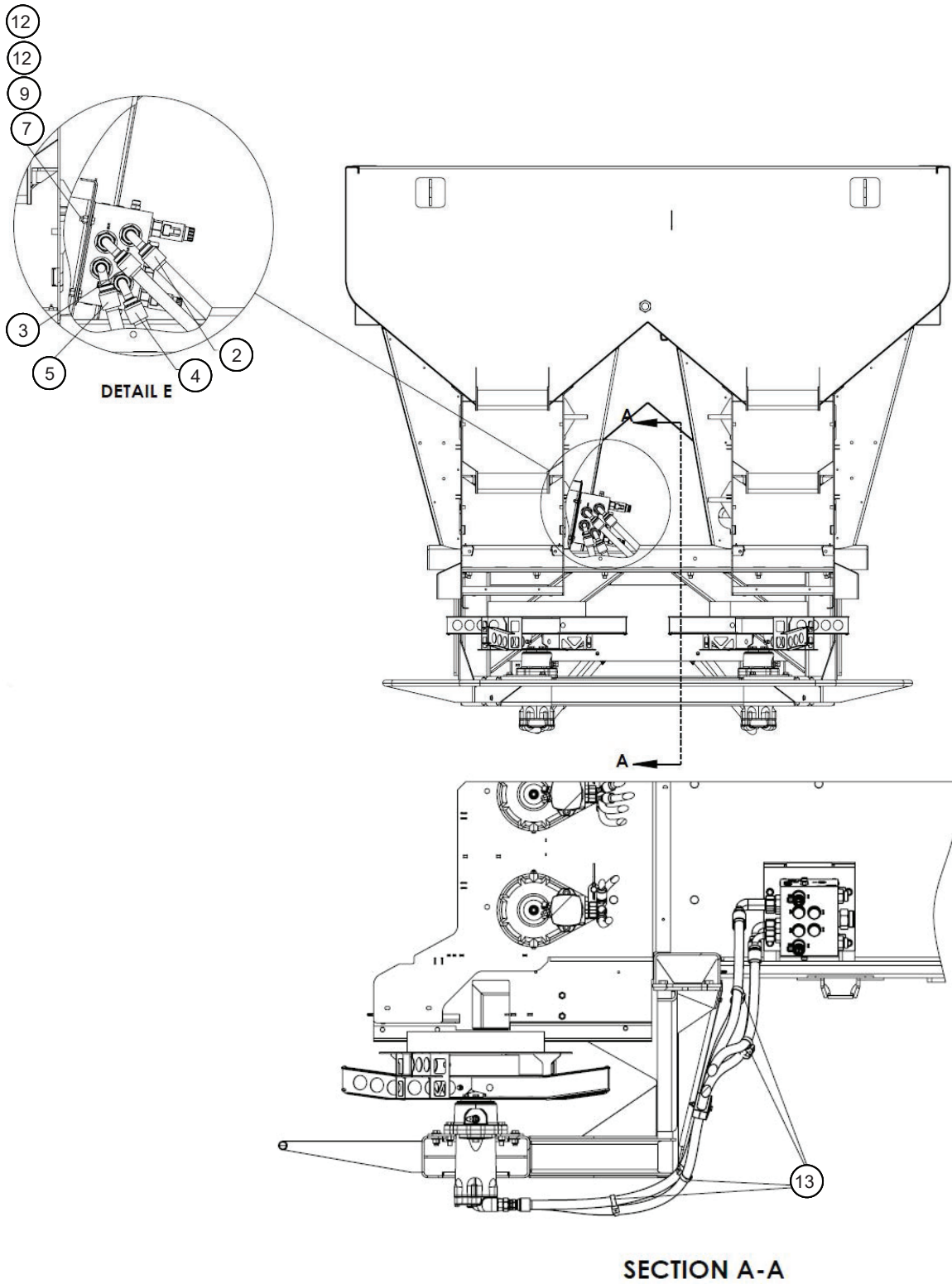


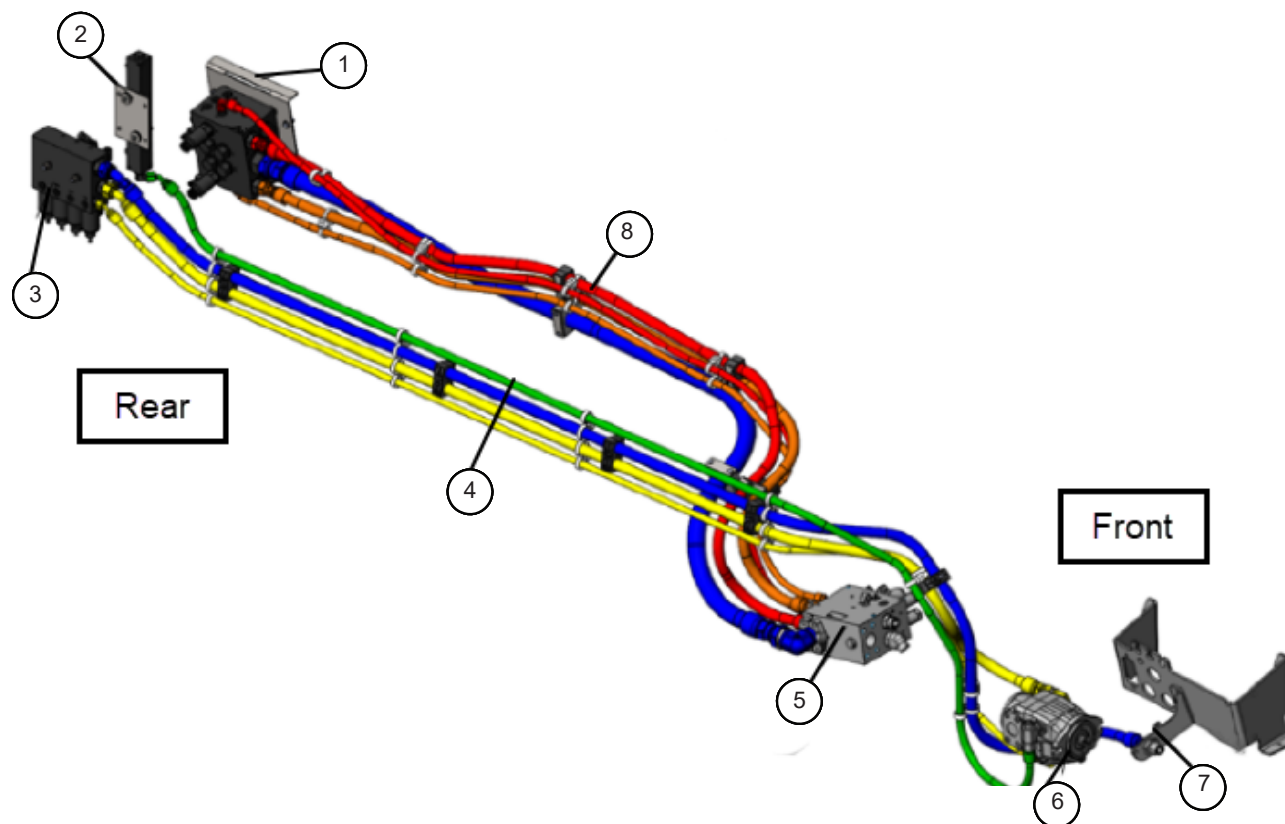
Key	Part No.	Description	Qty	Key	Part No.	Description	Qty
1	323645	Valve - Assy Mounting Spinner	1	7	36398	Capscrew - .375-16NC X 1 SS	4
2	321696	Hose - Assy .75 X 65 100R12	1	8	42221	Nut - Lock .313-18NC SS	2
3	321697	Hose - Assy .75 X 62 100R12	1	9	72054	Nut - Lock .375-16NC SS	4
4	321698	Hose - Assy .75 X 63 100R12	1	10	315721	Clamp - Tubing Twin 1.10"	2
5	321699	Hose - Assy .75 X 64.5 100R12	2	11	305267	Plate - Cover Hose Clamp 304	2
6	71830	Capscrew - .313-18NC X 2.5 SS	4	12	36425	Washer - Flat .375 SS	8
				13	310648	Tie - Dual Clamp	5



SECTION B-B

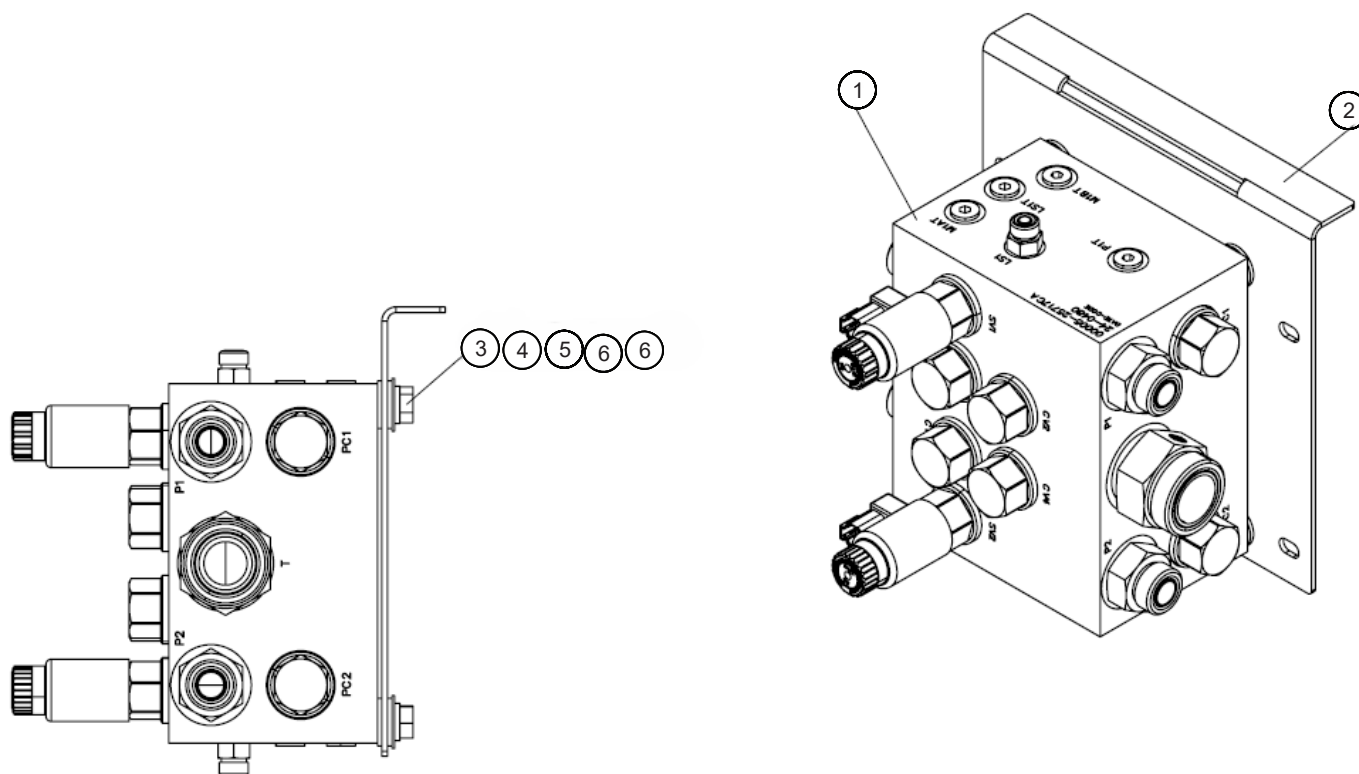






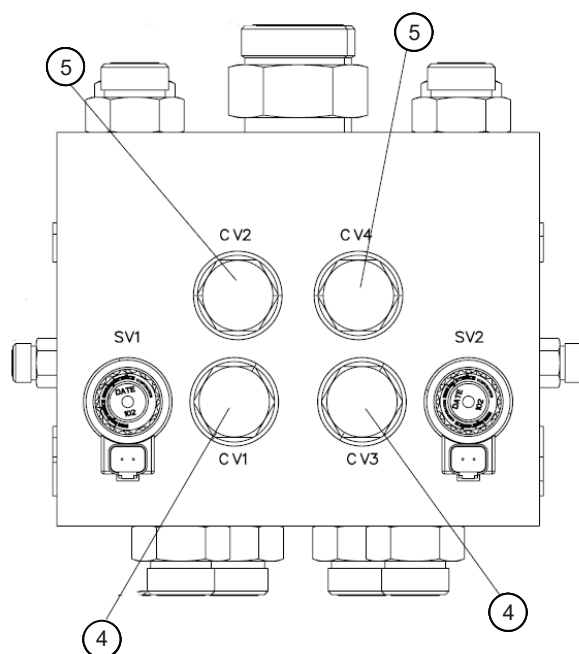
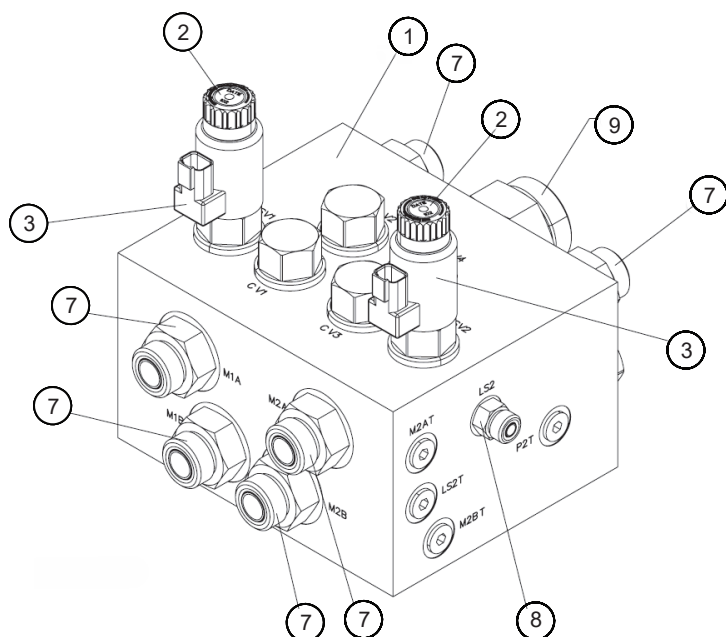
Key	Description	Refer to Page #
1	Spinner Control Valve (Spreader)	20
2	Case Drain	23-26
3	Conveyor Control Valve (Spreader)	29
4	Conveyor Control Valve Hoses (Spreader)	22
5	Spinner Valve (Chassis)	20
6	Hydraulic Pump (Chassis)	16-18
7	Bulkhead (Chassis)	16-18
8	Spinner Control Valve Hoses (Spreader)	20

Valve - Assy Mounting Spinner



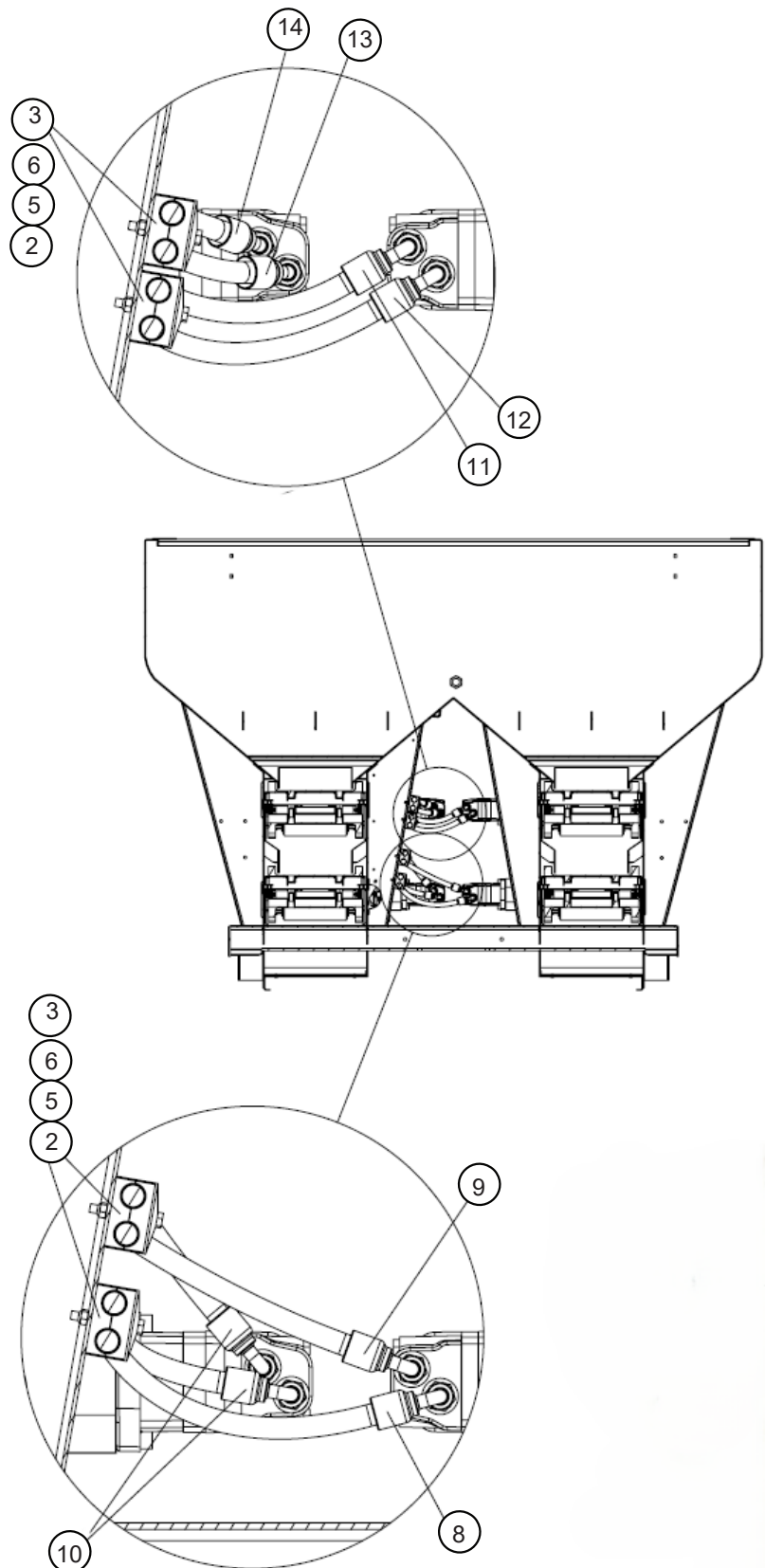
Key	Part No.	Description	Qty
1	N/A	Valve- Assy Spinner Control	1
2	322372	Valve – Flow control 60GPM	2
3	317382	Coil - 12 VDC Deutsch	2
4	322368	Valve - Check 50PSI	2
5	322369	Valve - Check 100PSI	2
6	322371	Valve – Normally open modulating	2
7	313184	Fitting - 12-16 520120	6
8	313455	Fitting - 6-6 520120	2
9	N/A	Fitting - 24-20 520120	1

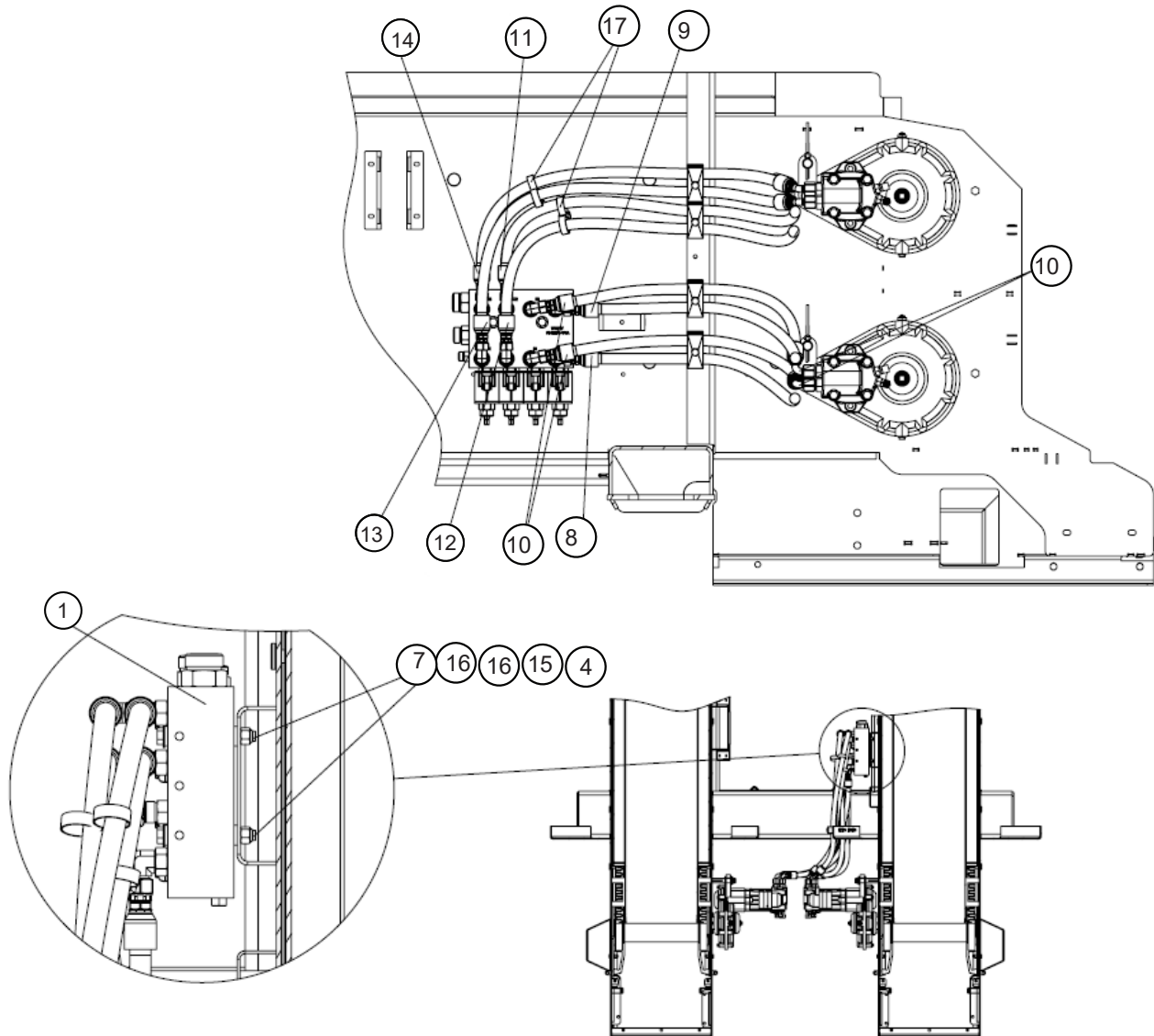
Valve - Assy Spinner Control



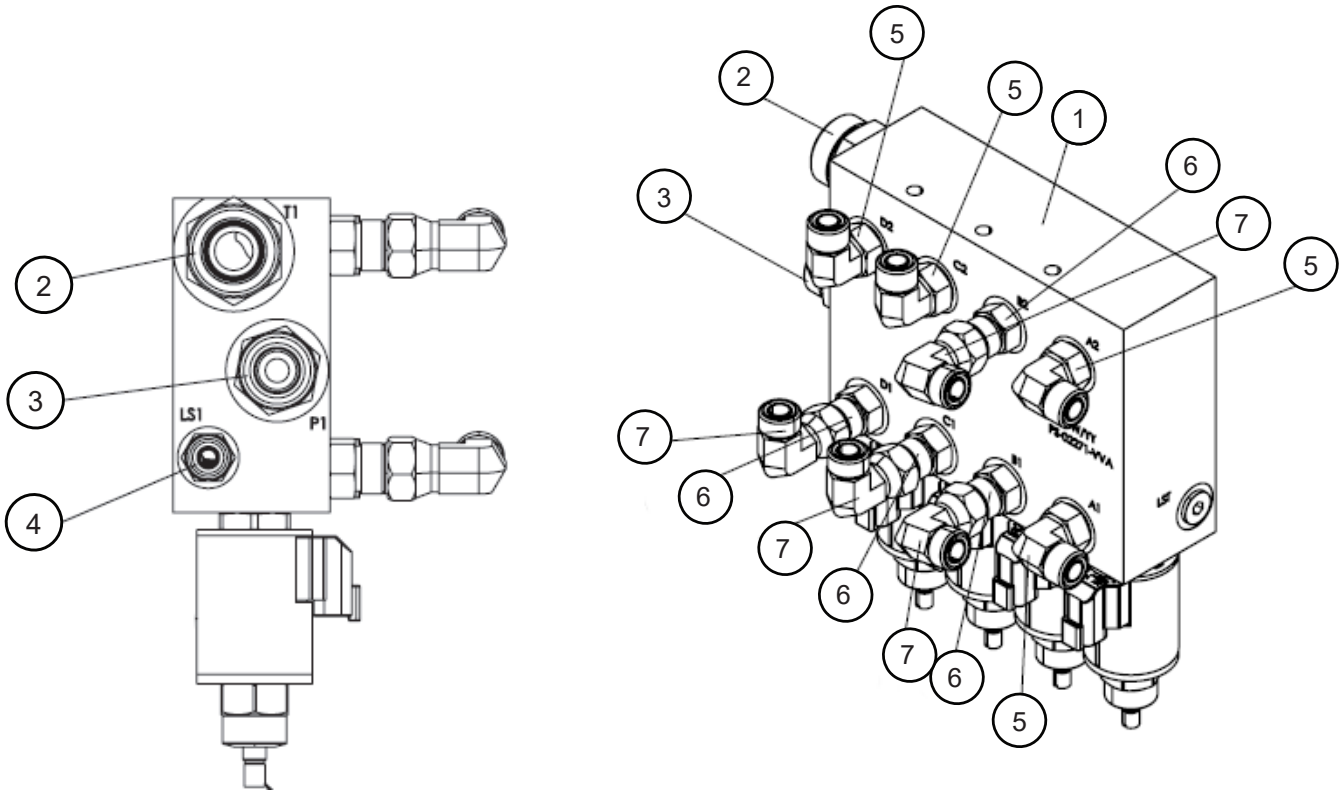
Key	Part No.	Description	Qty
1	323644	Valve- Assy Spinner Control	1
2	322934	Plate - Mount Valve 304	1
3	89521	Capscrew - .5-13NC X 1 GR8	4
4	36422	Washer - Lock .5 SS	4
5	36426	Washer - Flat .5 SS	4
6	321715	Washer- Step .638 ID X .875 OD	8
7	-	Loctite - 243	-

Conveyor Hydraulics



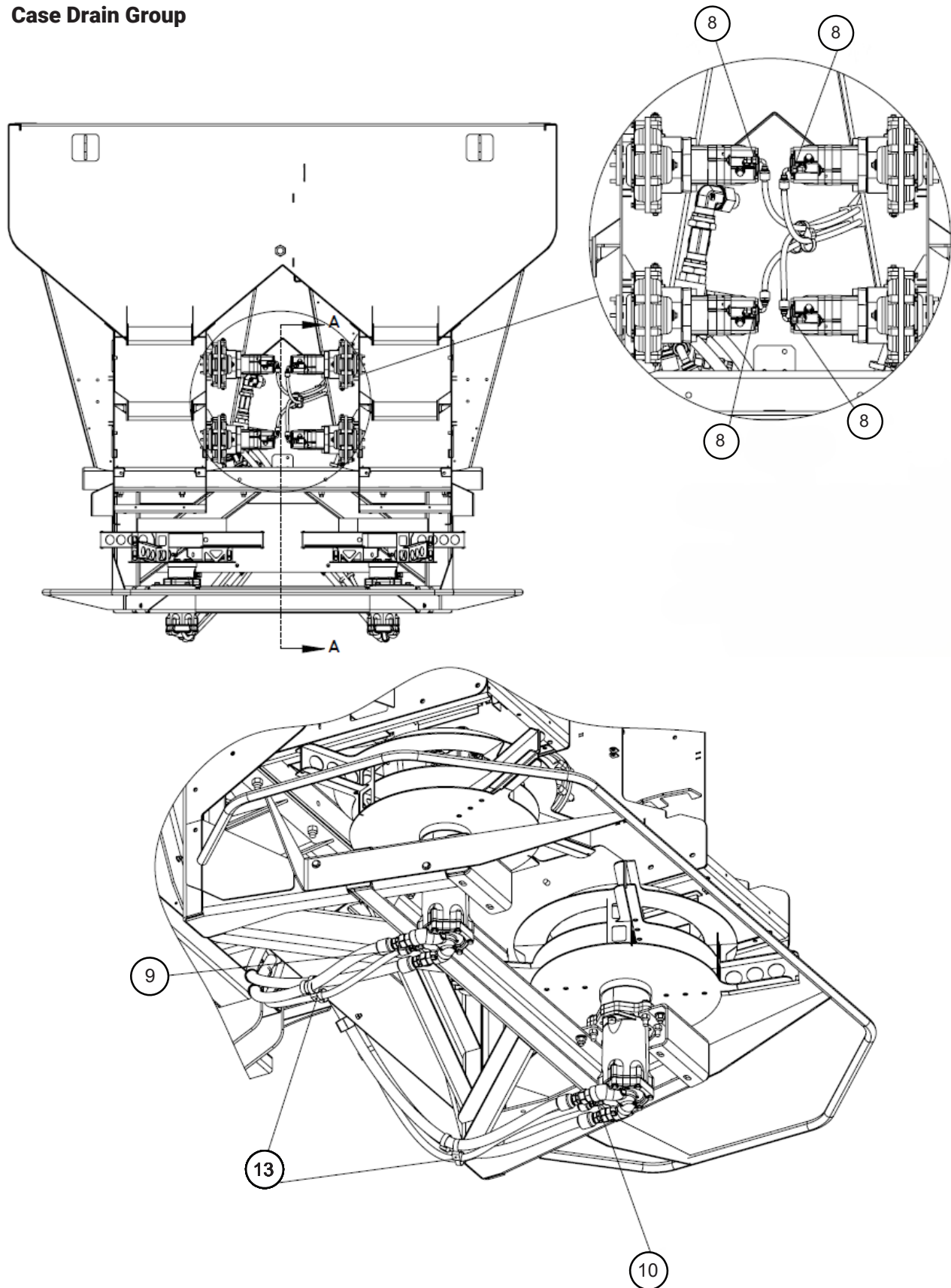


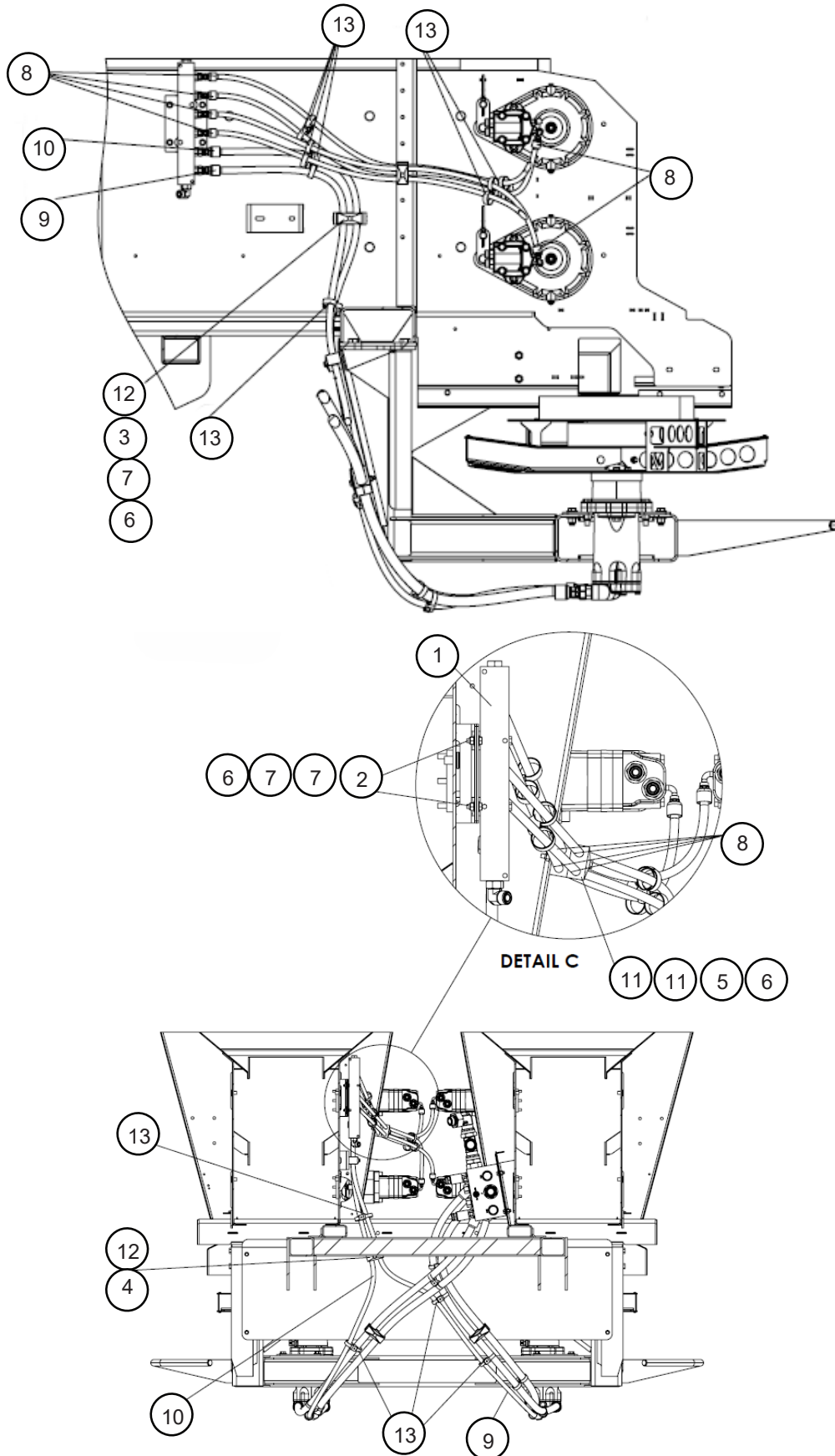
Key	Part No.	Description	Qty	Key	Part No.	Description	Qty
1	322898	Valve - Assy Conveyor Control	2	10	322900	Hose - Assy .5 X 25.5 100R19	2
2	310649	Clamp - Tubing Twin .84"	2	11	321707	Hose - Assy .5 X 34 100R19	1
3	42221	Nut - Lock .313-18NC SS	2	12	321706	Hose - Assy .5 X 37 100R19	2
4	72054	Nut - Lock .375-16NC SS	2	13	322902	Hose - Assy .5 X 35.5 100R19	2
5	310688	Plate - Cover Hose Clamp 304	1	14	322903	Hose - Assy .5 X 33 100R19	2
6	71830	Capscrew - .313-18NC X 2.5 SS	3	15	302099	Washer - Step .38ID X .53OD X .13	2
7	96879	Capscrew - .375-16NC X 3.5 SS	4	16	36425	Washer - Flat .375 SS	1
8	322899	Hose - Assy .5 X 27.5 100R19	2	17	310648	Tie - Dual Clamp	3
9	321703	Hose - Assy .5 X 26 100R19	2				

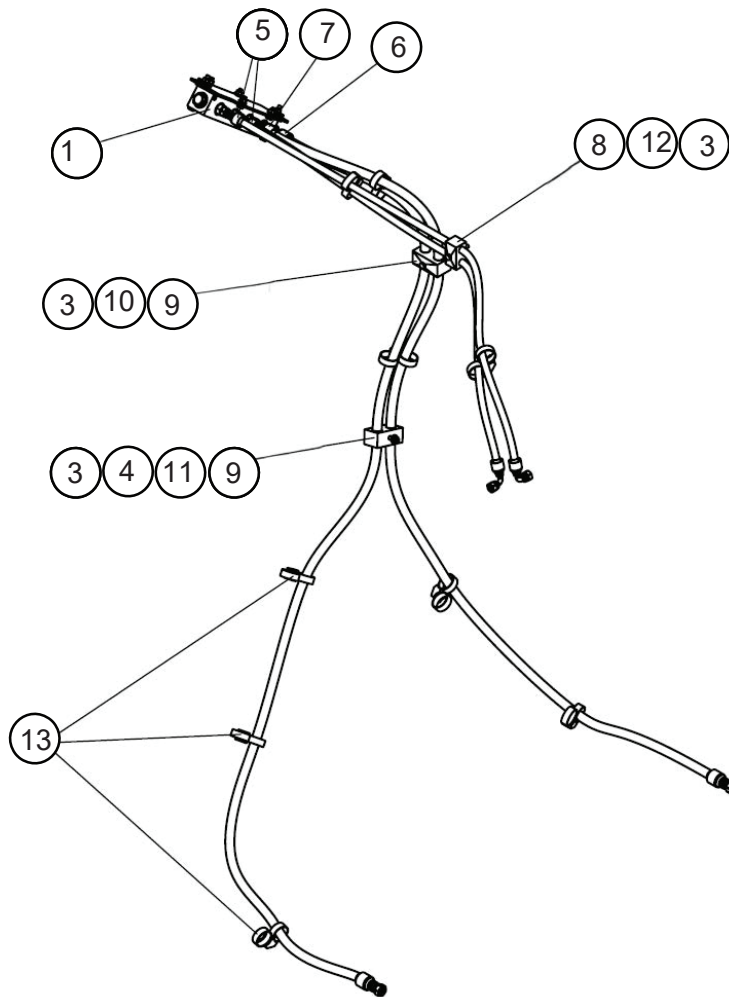
Conveyor Control Valve Assembly


Key	Part No.	Description	Qty
	322898	Valve - Assy Conveyor Control	
1	320878	Valve - Assy Conveyor Control	1
2	312655	Fitting - 16-16 520120	2
3	313450	Fitting - 12-12 520120	2
4	313455	Fitting - 6-6 520120	2
5	313451	Fitting - 8-8 520220	1
6	313454	Fitting - 8-8 520120	1
7	304306	Fitting - 8-8 520221	1

Case Drain Group

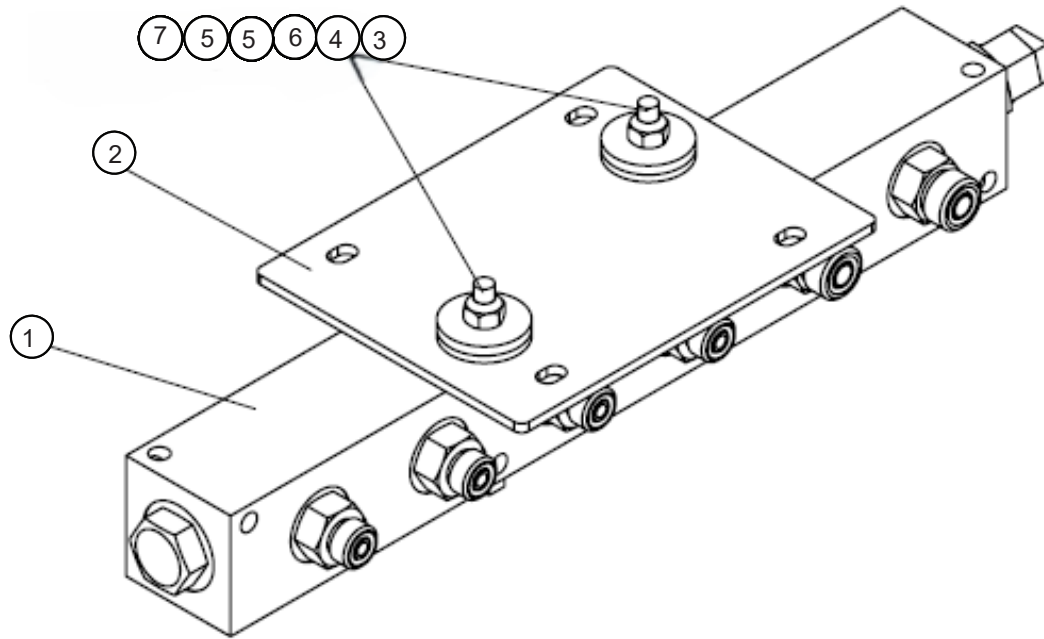






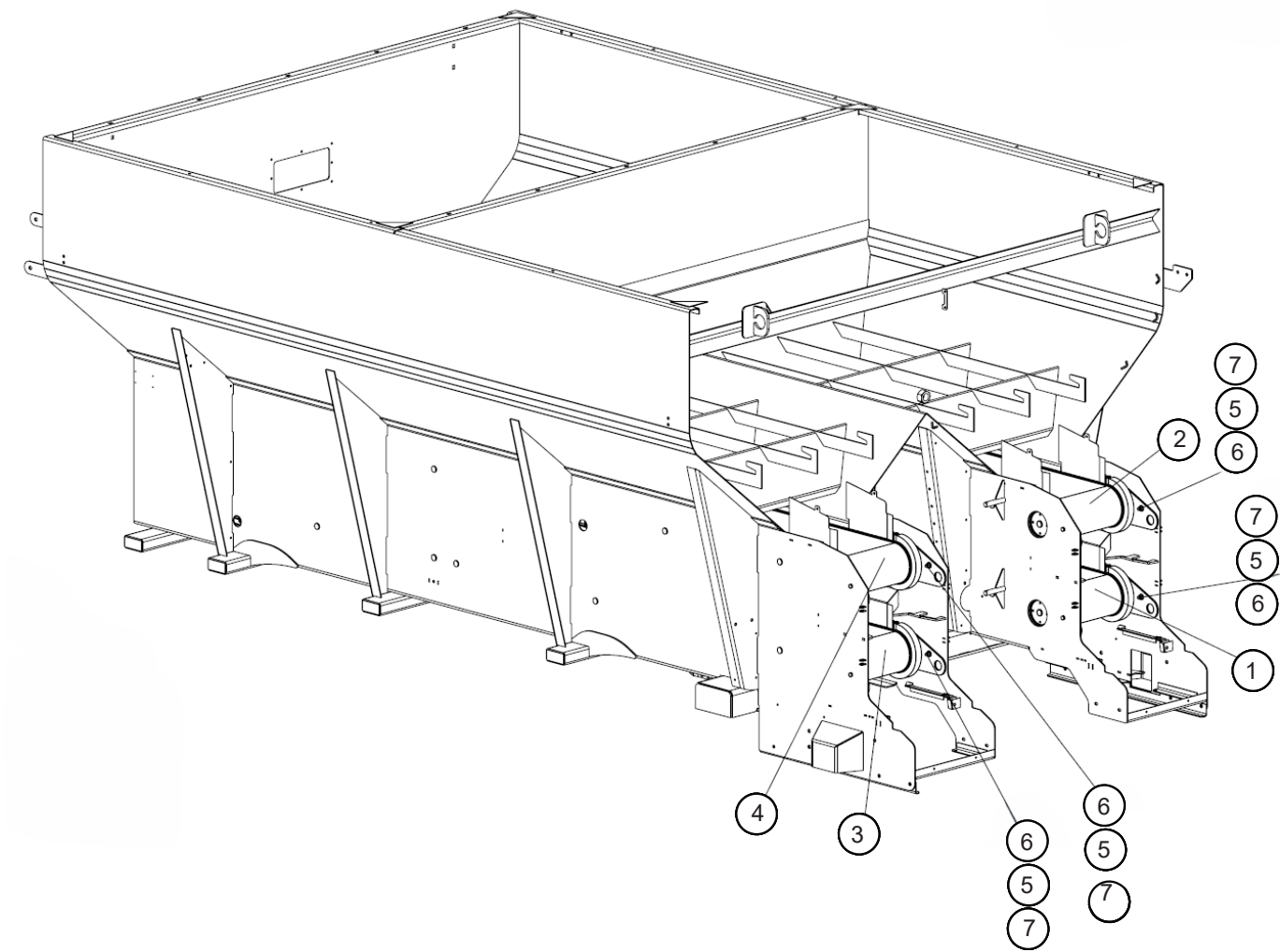
Key	Part No.	Description	Qty	Key	Part No.	Description	Qty
-	322896	Case Drain Mounting Assembly		6	42034	Nut - Lock .25-20NC SS	7
1	321711	Valve - Assy Mounting Case Drain	1	7	36423	Washer - Flat .25 SS	11
2	36393	Capscrew - .25-20NC X .75 SS	4	8	322895	Hose - Assy .25 X 46 100R19	4
3	34865	Capscrew - .25-20NC X 2.25 SS	1	9	321722	Hose - Assy .38 X 89 100R19	1
4	34501	Capscrew - .25-20NC X 2.5 SS	1	10	321723	Hose - Assy .38 X 82 100R19	1
5	36396	Capscrew - .25-20NC X 3 SS	1	11	300031	Clamp - Tubing Twin .5"	2
				12	75036	Clamp - Tubing Twin .75"	2
				13	310648	Tie - Dual Clamp Max 1.3 Bundl	11

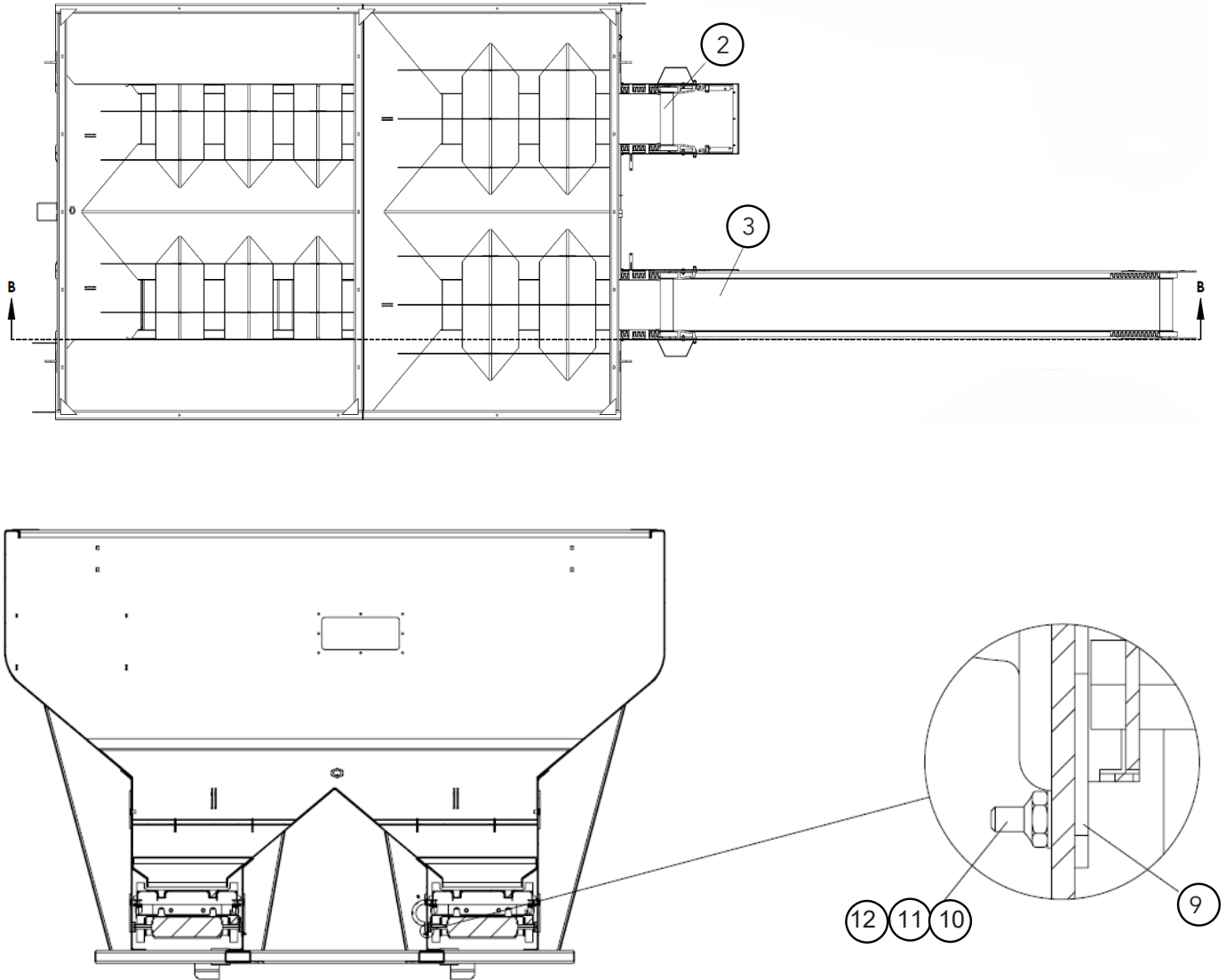
Case Drain Mounting Assembly



Key	Part No.	Description	Qty
	321711	Case Drain Mounting Assy	--
1	321713	Valve - Assy Case Drain	1
2	321712	Bracket - Valve Mount	1
3	34866	Capscrew - .25-20NC X 2.75 SS	2
4	42034	Nut - Lock .25-20NC SS	2
5	321715	Washer - Step .638 ID X .875 OD	4
6	321716	Washer - .313 ID X 1.125 OD X 10	2
7	321717	Spacer - 304	2

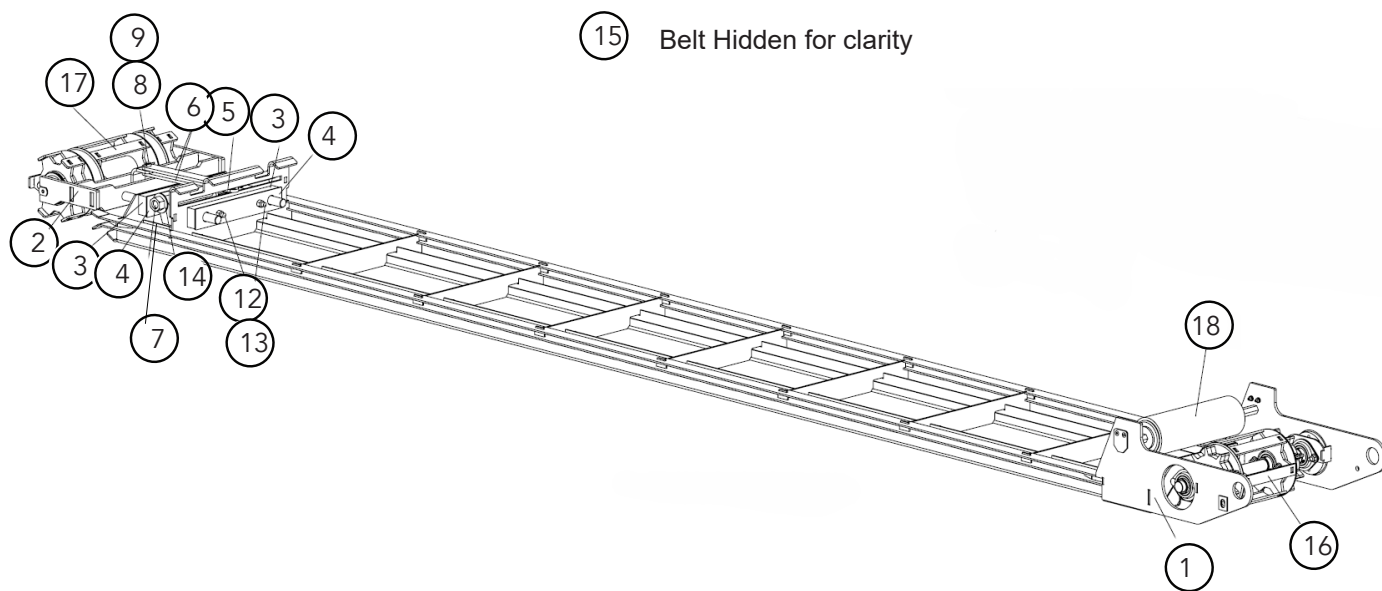
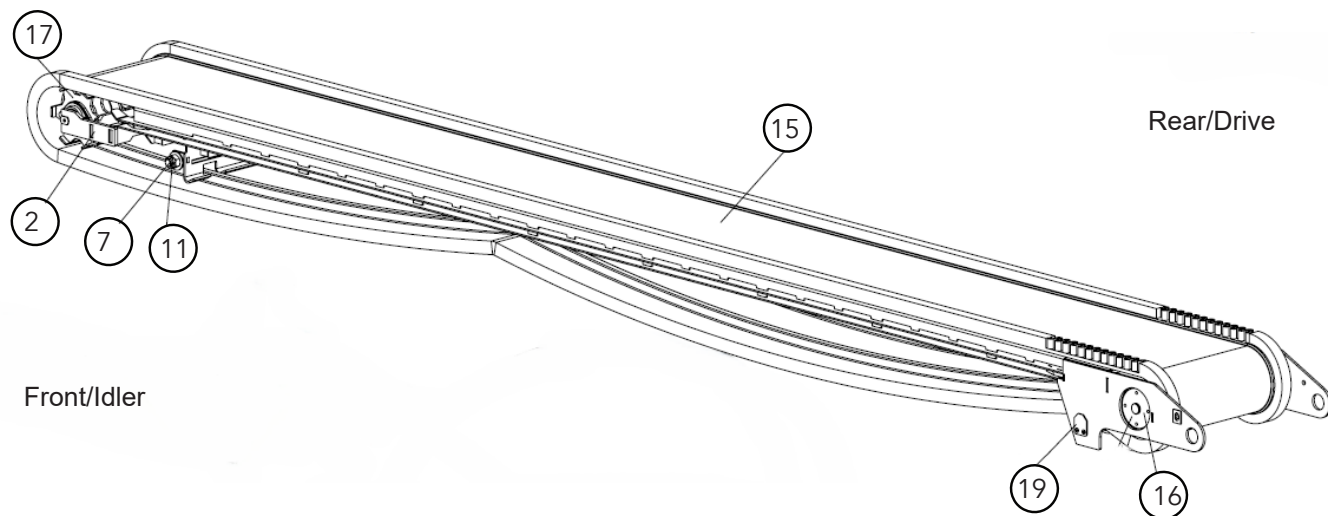
14' Conveyor Group
Main

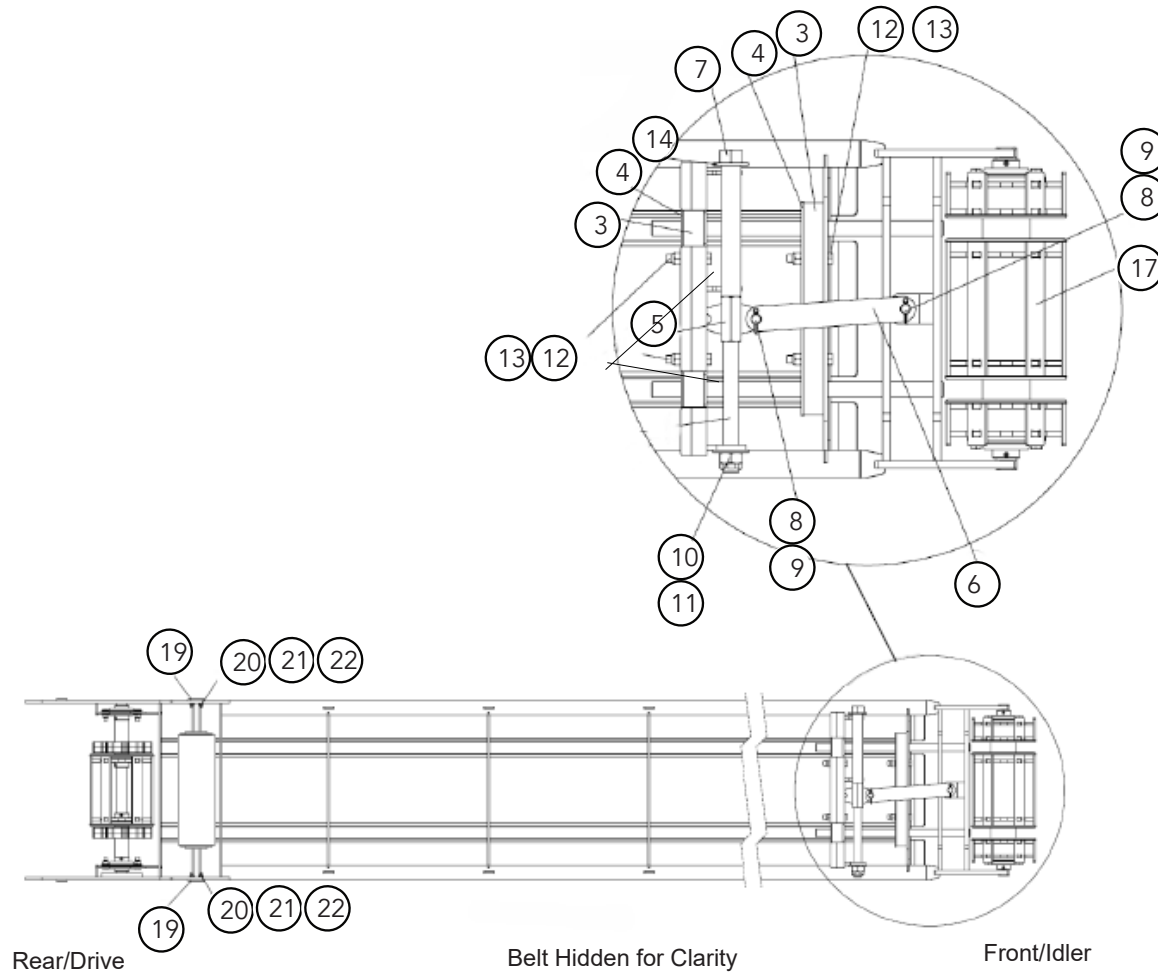




Key	Part No.	Description	Qty	Key	Part No.	Description	Qty
	322840	Conveyor - Group 12"		6	36399	Capscrew - .375-16NC X 1.25 SS	8
1	322842	Cartridge - Assy RH Conv 12	1	7	72054	Nut - Lock .375-16NC SS	8
2	322843	Cartridge - Assy RH Conv 6'	1	8	322463	Pulley - Snubber	2
3	322844	Cartridge - Assy LH Conv 12'	1	9	323265	Tab - Cover 304	2
4	322845	Cartridge - Assy LH Conv 6'	1	10	323271	Flat Head - 10-24 .75 SS	4
5	36425	Washer - Flat .375 SS	8	11	171052	Washer - Flat #10 SS	4
				6	56355	Pulley - Snubber	4

Conveyor Cartridges



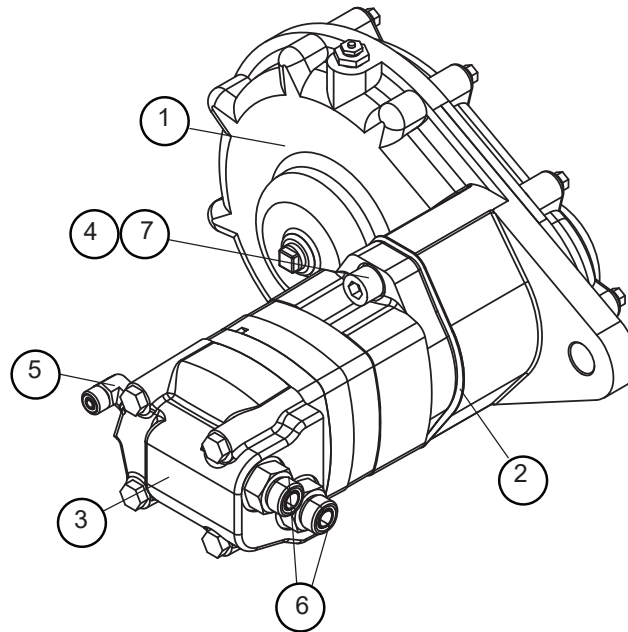


Key	Part No.	Description	Qty
	322842	Complete Conv Cartridge - RH 12'	1
	322843	Complete Conv Cartridge - RH 6'	
	322844	Complete Conv Cartridge - LH 12'	
	322845	Complete Conv Cartridge - LH 6'	
1	322850	Cartridge - Wldmt Conv 12'	1
2	325321	Cartridge - Wldmt Takeup 304	1
3	321662	Block - Guide UHMW	4
4	321646	Guide - 304	4
5	321651	Nut - Wldmt Coupling SS	8
6	325320	Plate - Link 304	12
7	321664	Shaft - Wldmt Threaded	1
8	88398	Pin - Clevis .5 X 1 SS	2
9	36427	Pin - Cotter .125 X 1 SS	2
10	321663	Nut - Castle .75-10UNC 304	1
11	34859	Pin - Roll .156 X 1 SS	2

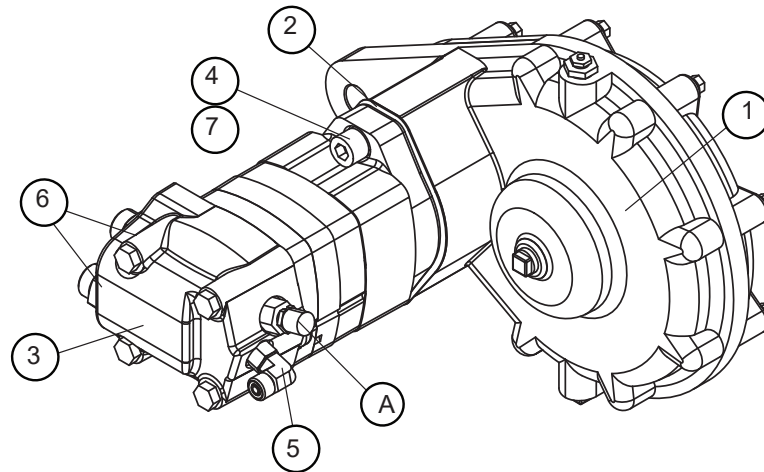
Key	Part No.	Description	Qty
12	72054	Capscrew - .375-16NC X 2 SS	4
13	56408	Nut - .375-16NC SS Lock	4
14	56355	Washer - .75 SS Flat	4
15	321251 321252	Belt - Conv 12' #6 5.63" Belt - Conv 6' # 6 15.63"	1
16	322832	Shaft - Assy Drive (See next page.)	1
17	322452	Pulley - Assy Tail (See page 29.)	1
18	322463	Pulley - Snubber	2
19	323265	Tab - Cover 304	4
20	323271	Flat Head - 10-24 .75 SS	4
21	171052	Washer - #10 SS Flat	2
22	56355	Nut - #10-24NC Lock SS	2

Conveyor Gear Cases

Gear Case Assy - LH

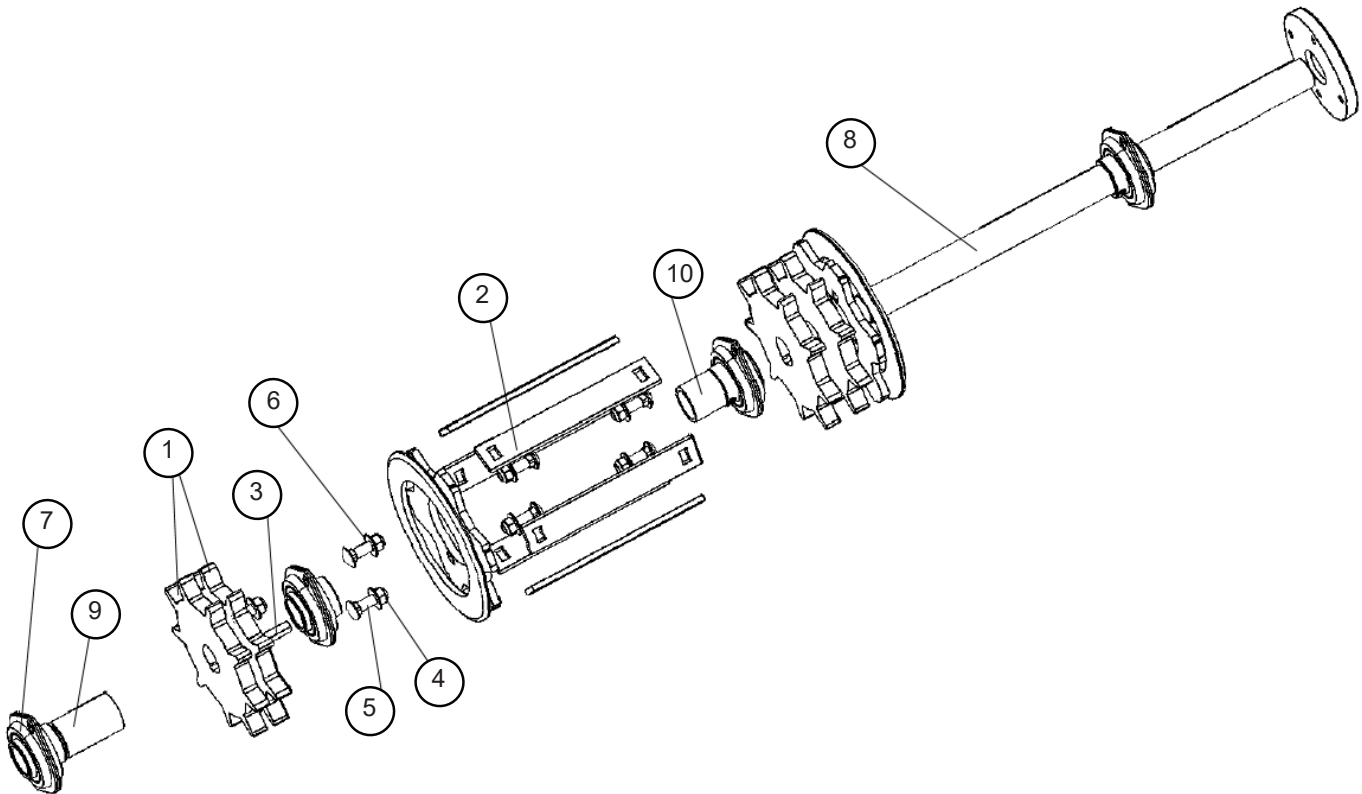


Gear Case Assy - RH



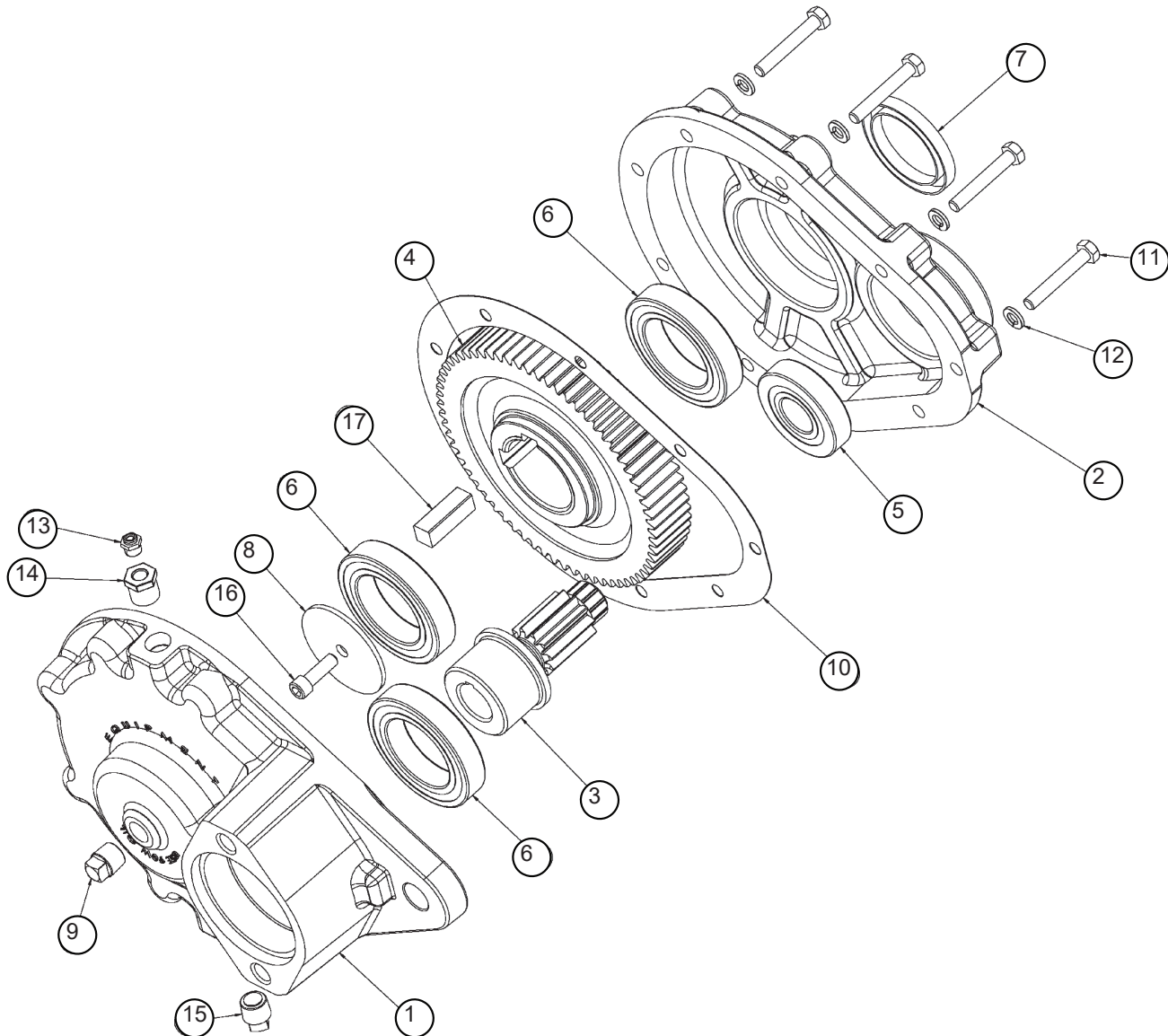
Key	Part No.	Description	Qty	Key	Part No.	Description	Qty
	322886	Gearcase - Assy 6:1 4.9CID LH		4	30227	Washer - Lock Socket HD .5"	2
	322887	Gearcase - Assy 6:1 4.9CID RH		5	312654	Fitting - 4-4 520220	1
1	36671	Gear Case - 6:1 (See next page for service parts.)	1	6	304309	Fitting - 8-10 520120	2
2	74524	Gasket - SAE 101-2 B	1	7	305098	Screw - Sockethead .5-13NC X 1.75	2
3	320877	Motor - Hyd 4.9CID	1				
A	89709-AA	Sensor	1				
B	77938	*Seal Kit *Not Shown*	1				

Drive Shaft Exploded



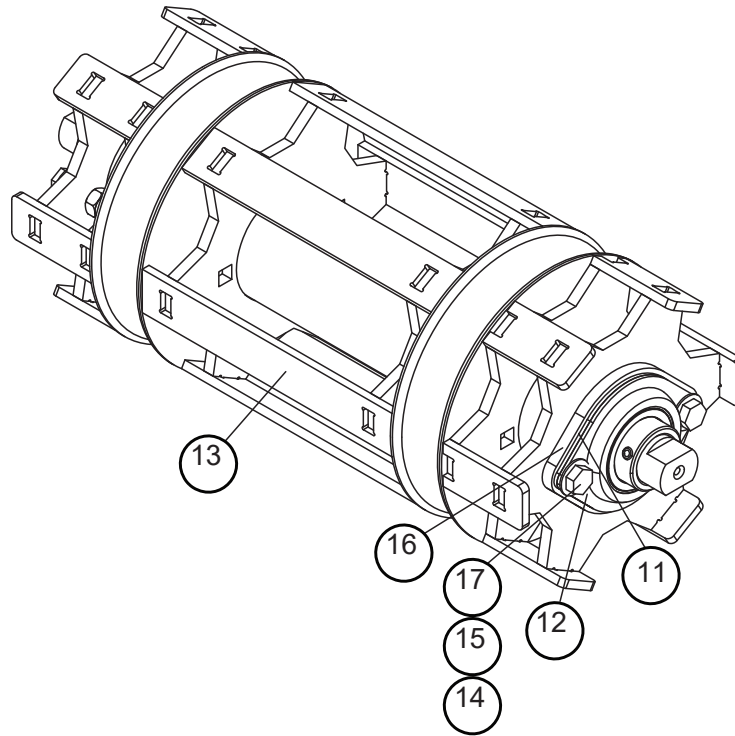
Key	Part No.	Description	Qty	Key	Part No.	Description	Qty
	322832	Shaft - Assy Drive	1	6	36424	Washer - .313 SS Flat	8
1	321205	Sprocket - 304	4	7	321732	Bearing - 304	4
2	322828	Roller - Wldmt 304	1	8	322833	Shaft - Wldmt Drive 304	1
3	321724	Key - Sq .25 X .875	2	9	322837	Spacer - Tube 304	1
4	42221	Nut - .313-18NC SS Lock	8	10	322838	Spacer - Tube 304	1
5	42639	Bolt - .313-18NC X 1 SS	8				

Gear Case Service Parts

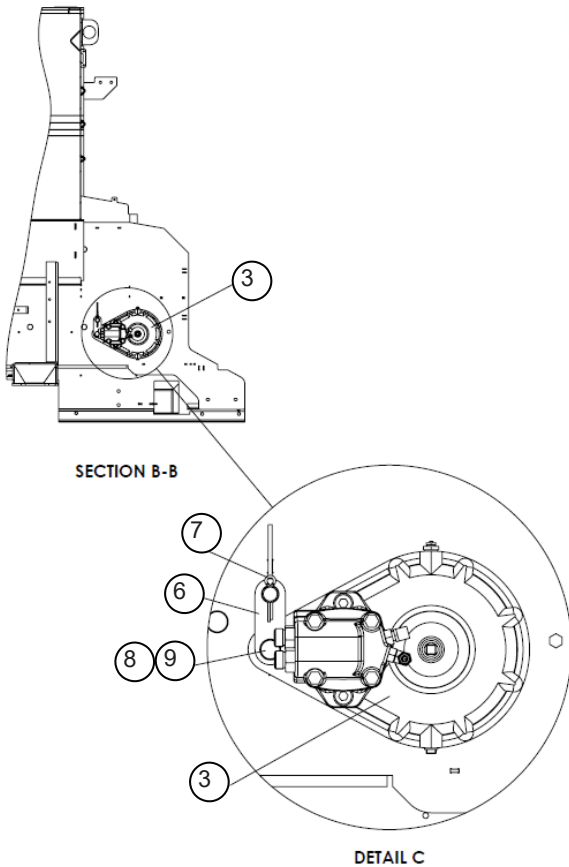
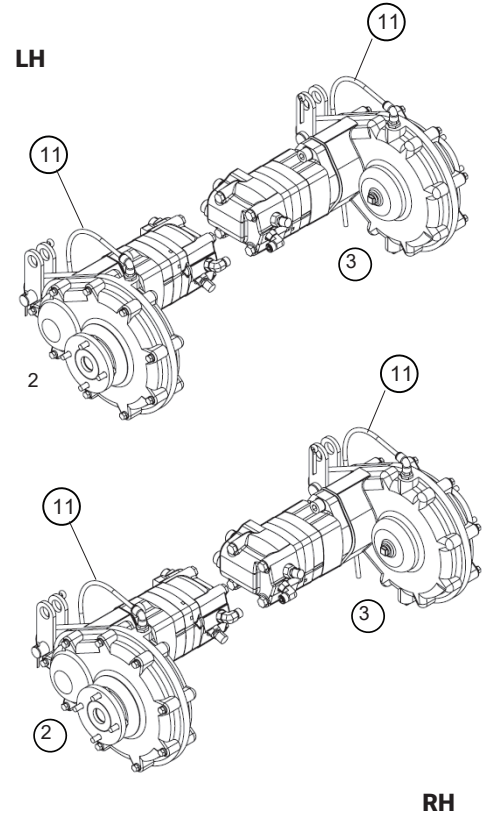
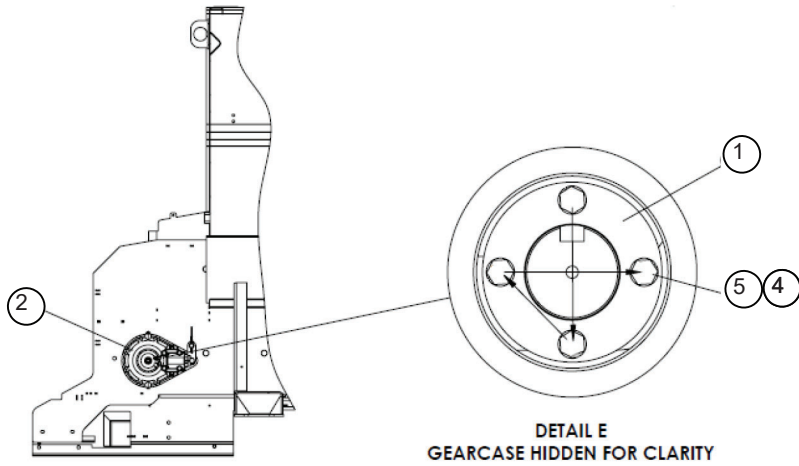


Key	Part No.	Description	Qty	Key	Part No.	Description	Qty
	36671	Gear Case Service Assy	1	10	304563	Gasket - Housing Single Pinion	1
1	304559	Housing - Outboard Sngl Pinion	1	11	20040	Capscrew - .313-18NC X 2 Gr5	9
2	304560	Housing - Inboard Sngl Pinion	1	12	20711	Washer - .313 Zn Lock	9
3	304561	Gear - Pinion 11t	1	13	2564	Tube - Breather	1
4	304562	Gear - Driven 67t	1	14	27465	Bushing - 3/8 X 1/8	1
5	37007	Bearing - Ball	1	15	21490	Plug - Magnetic Sq Head .38NPT	1
6	37008	Bearing - Ball	3	16	38980	Screw - Allen Hd .31-18NC X 1	1
7	37006	Seal - Oil	1	17	37010	Key - SQ .5 X 1.5	1
8	38979	Washer - Retainer	1				
9	6031	Plug - 3/1 X 1/8 NPT	1				

Tail Pulley



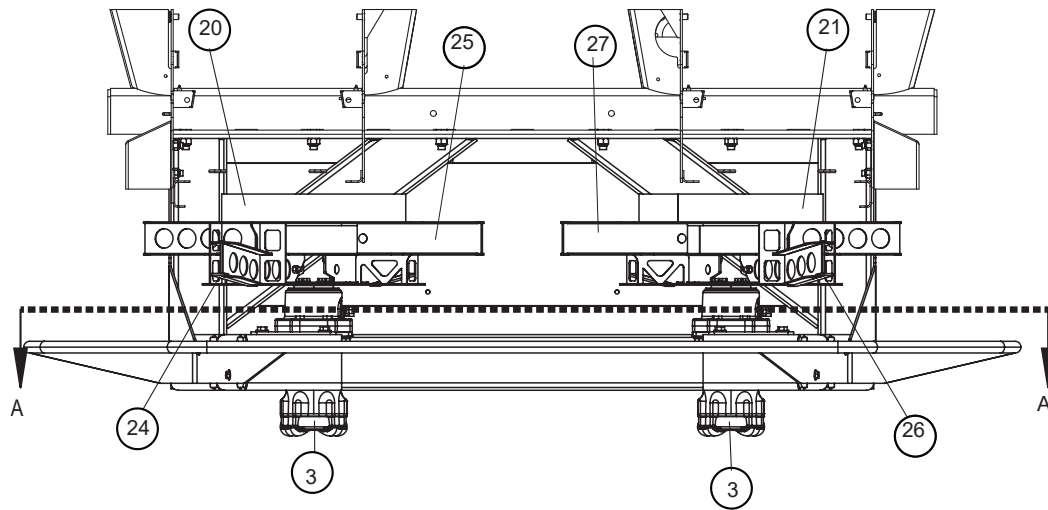
Key	Part No.	Description	Qty
	322452	Pulley - Assy Tail	1
11	322458	Shaft - Idler Pulley 304	1
12	321732	Bearing - 304	2
13	322453	Roller - Wldmt Tail	1
14	42221	Nut - .313-18NC SS Lock	4
15	36424	Washer - .313 SS Flat	4
16	322999	Spacer - Bearing 304	2
17	36397	Capscrew - .313-18NC X 1.25 SS	4



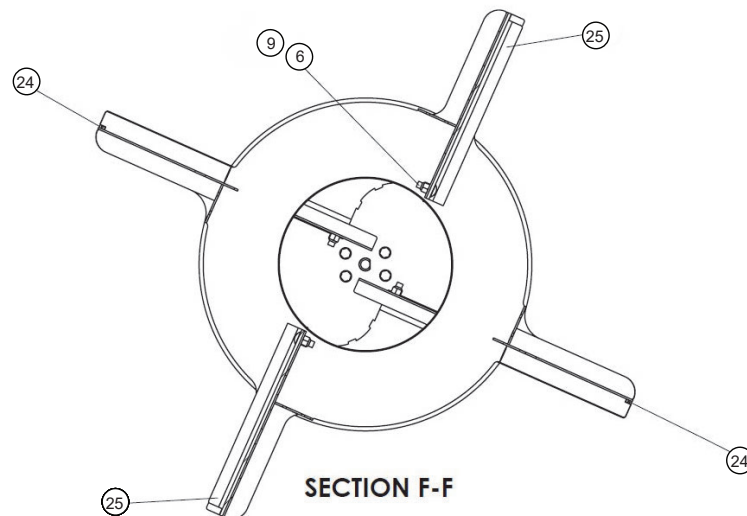
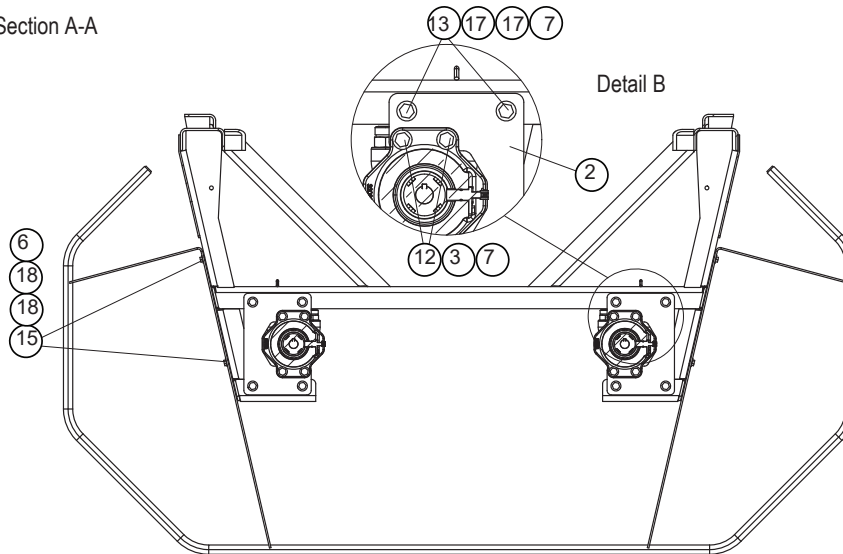
Key	Part No.	Description	Qty
1	322883	Shaft - Wldmt Adapter 304	4
2	322886	Gearcase - Assy 6:1 4.9CID LH (See next page.)	2
3	322887	Gearcase - Assy 6:1 4.9CID RH (See next page.)	2
4	36419	Washer - .313 SS Lock	16
5	34580	Capscrew - .313-18NC X 1 SS	16
6	322890	Link - 304	8
7	316109	Pin - Cotter .25 X 1.5 SS	4
8	322892	Pin - Cotter .125 X 1.5 SS	4
9	322891	Pin - Clevis .75 X 1.75 SS	4
10	301315	Loctite - 243	-
11	306890	Breather Tube- Assy Gearcase	2

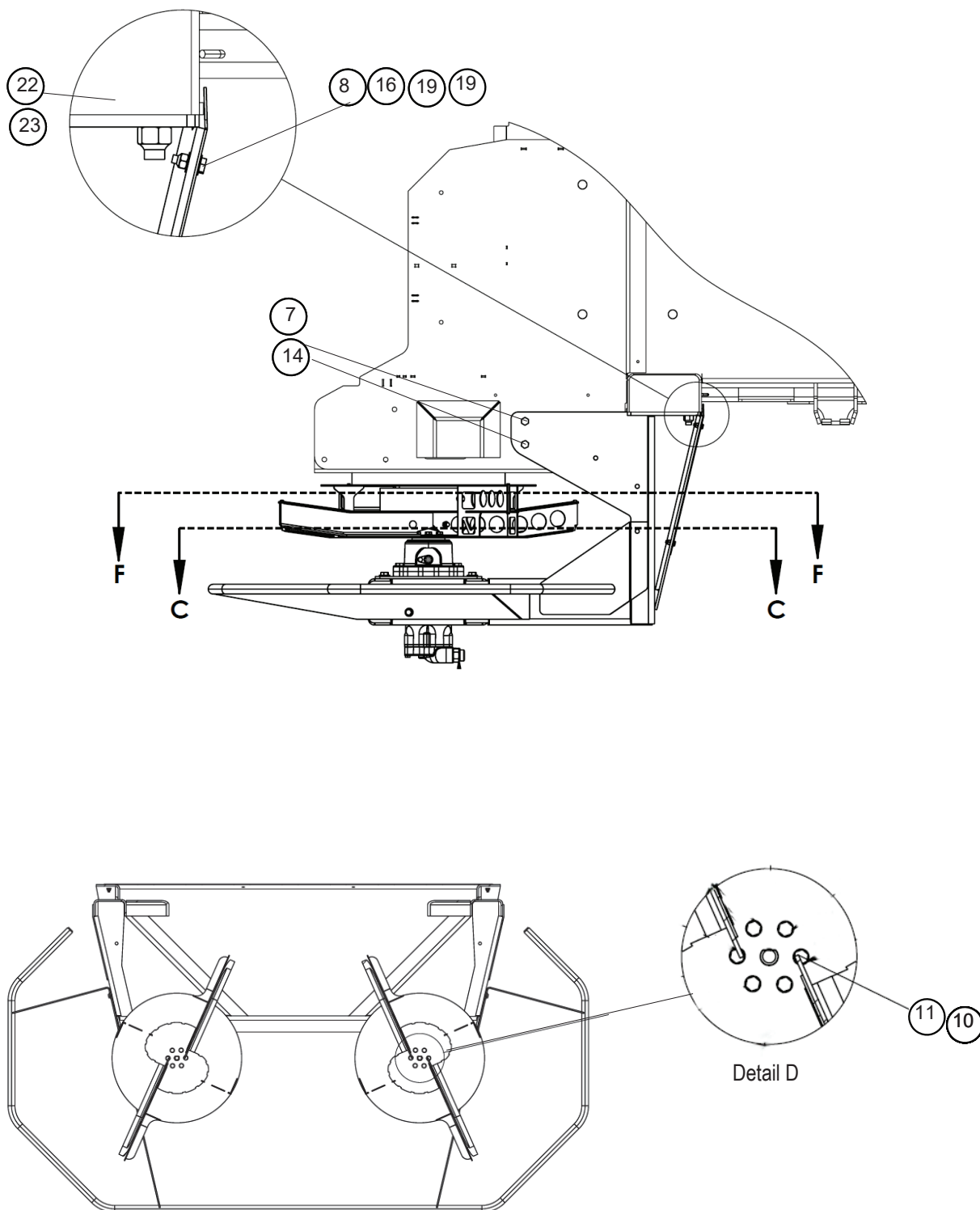
Spinners

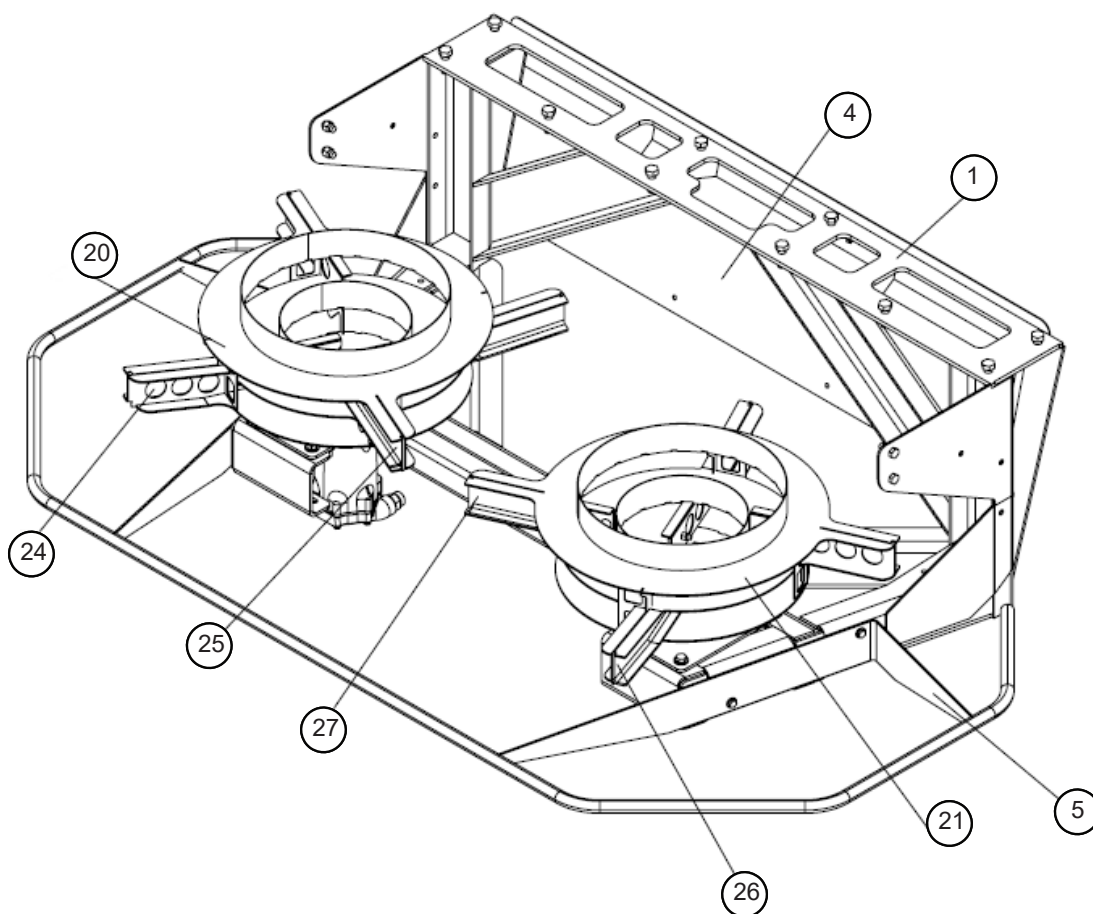
Spinner Assembly



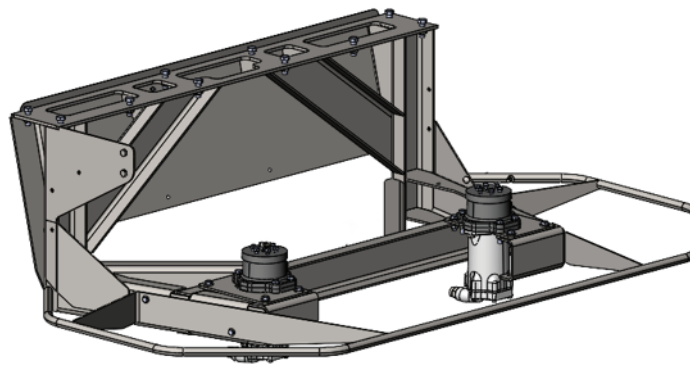
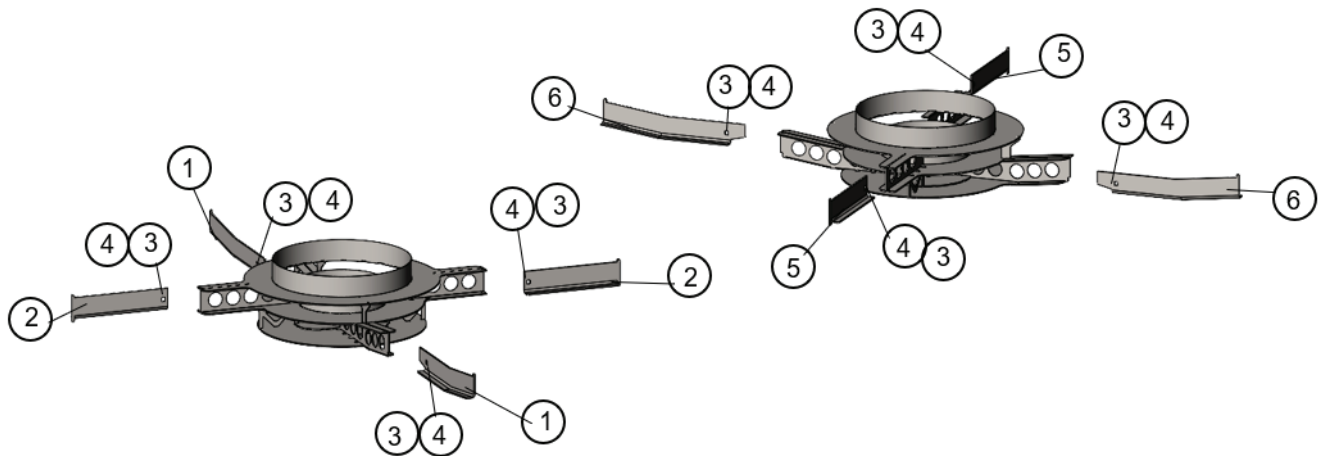
Section A-A





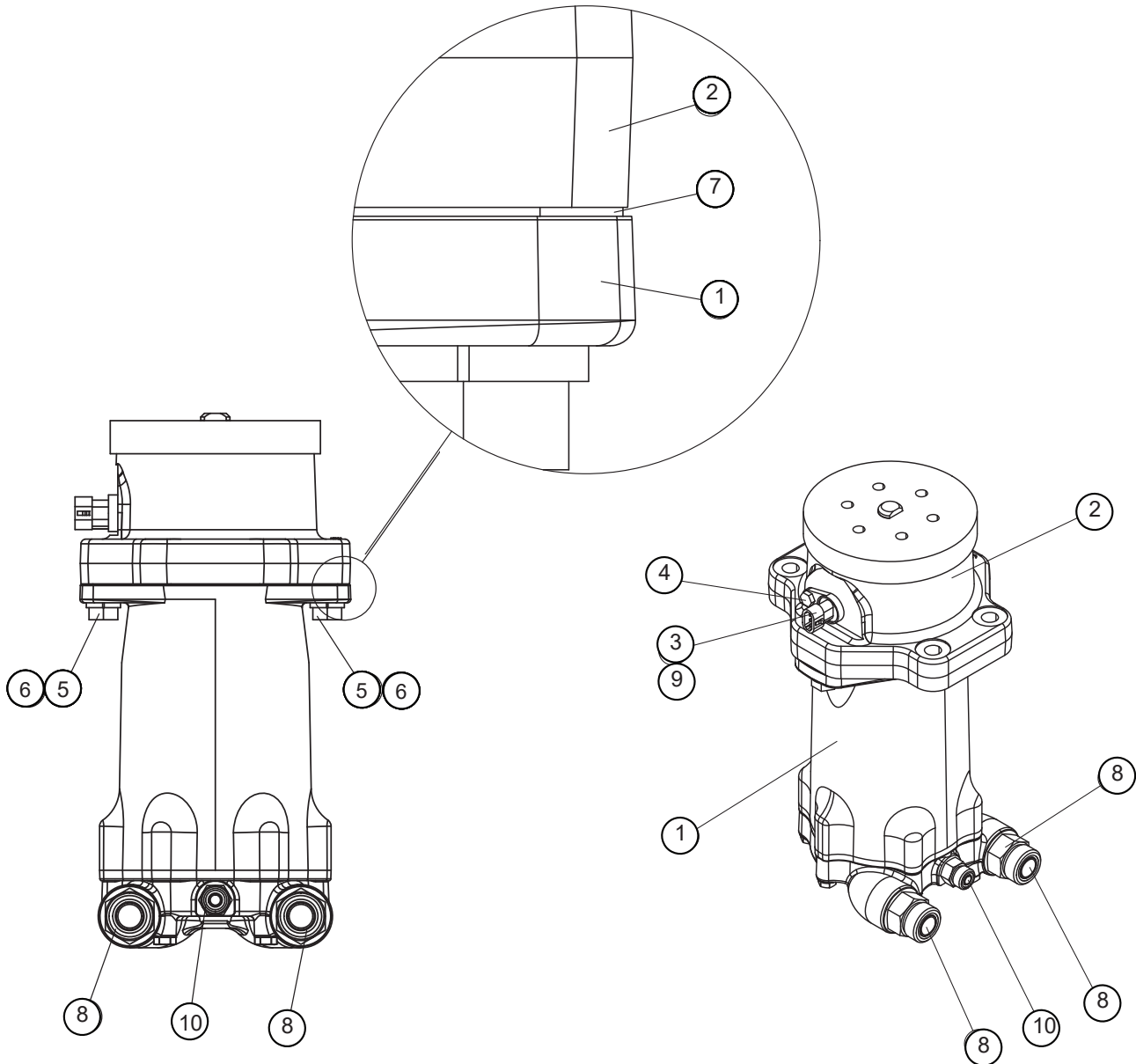


Key	Part No.	Description	Qty	Key	Part No.	Description	Qty
1	322465	Frame - Wldmt Spinner 304	1	15	36399	Capscrew - .375-16NC X 1.25 SS	4
2	322483	Mount - Spinner 304	2	16	36394	Capscrew - .25-20NC X .875 SS	6
3	321528	Motor - Assy Spinner (See next page.)	2	17	322259	Washer - Flat .5 Hd SS	16
4	321443	Plate - Backstop Panel 304	1	18	36425	Washer - .375 SS Flat	8
5	321530	Guard - Wldmt Spinner Lower	1	19	36423	Washer - .25 SS Flat	12
6	72054	Nut - .375-16NC SS Lock	12	20	322490	Disk - Wldmt LH 304	1
7	39016	Nut - .5-13NC SS Lock	20	21	322531	Disk - Wldmt RH 304	1
8	42034	Nut - .25-20NC SS Lock	6	22	58800	Capscrew - .625-11NC X 1.75 SS	10
9	36408	Bolt - .375-16NC X 1 SS	8	23	41762	Nut - Lock .625-11NC SS	10
10	36420	Washer - .375 SS Lock	12	24	324165	Overlay - BTM LH 304	2
11	36293	Capscrew - .375-16NC X .75 SS	12	25	324167	Overlay - TOP LH 304	2
12	42454	Capscrew - .5-13NC X 2.5 SS	8	26	324166	Overlay - BTM RH 304	2
13	36539	Capscrew - .5-13NC X 1.5 SS	8	27	324168	Overlay - TOP RH 304	2
14	36402	Capscrew - .5-13NC X 1.25 SS	4	Note: See next page for exploded spinner assembly view.			



Key	Part No.	Description	Qty
1	324165	Overlay - BTM LH	2
2	324167	Overlay - Top LH	2
3	36408	Bolt - Carriage .375 - 16NC X 1 SS	8
4	72054	Nut - Lock .375-16NC SS	8
5	324166	Overlay - BTM RH	2
6	324168	Overlay - Top RH	2

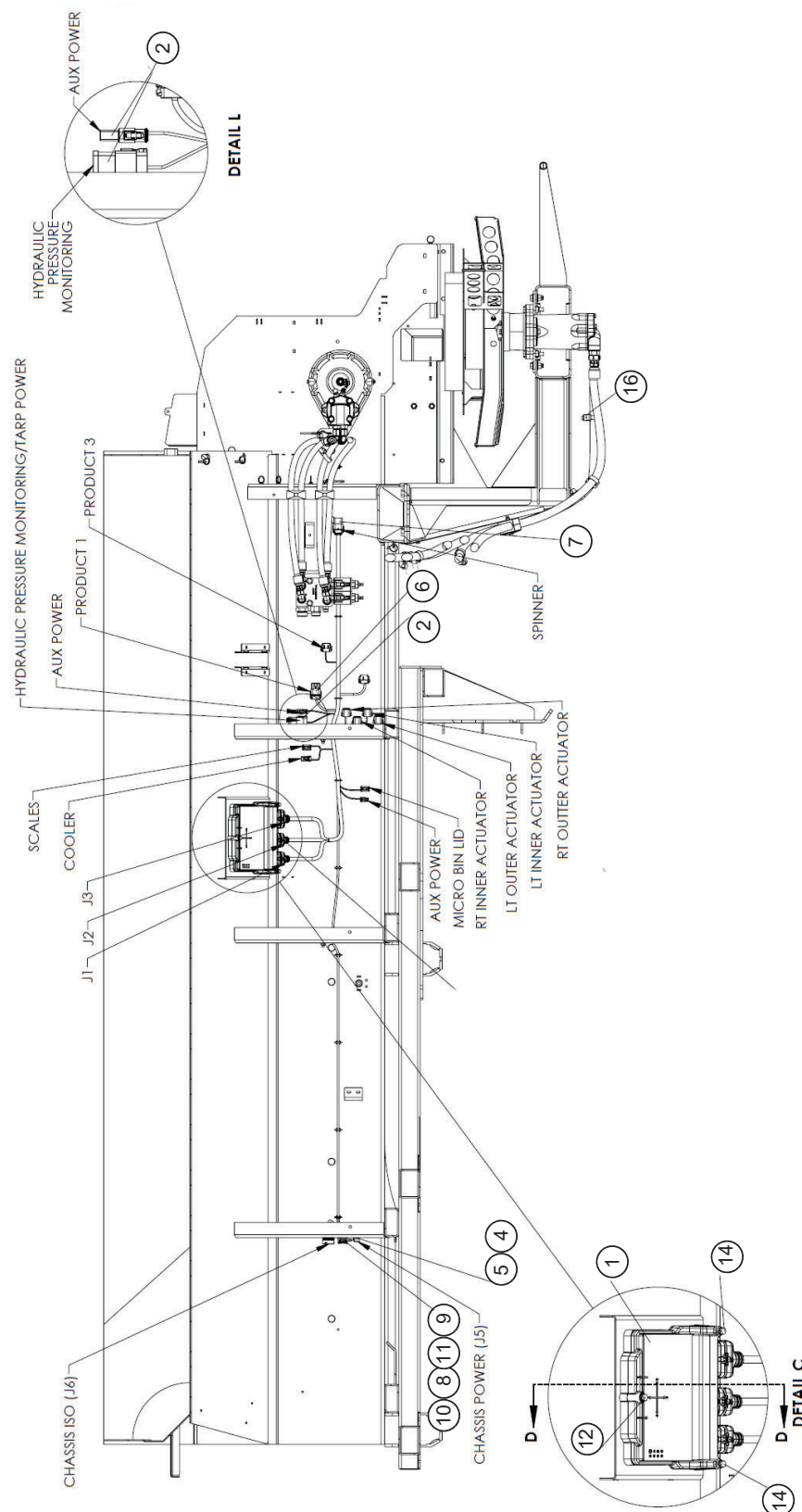
Spinner Motor

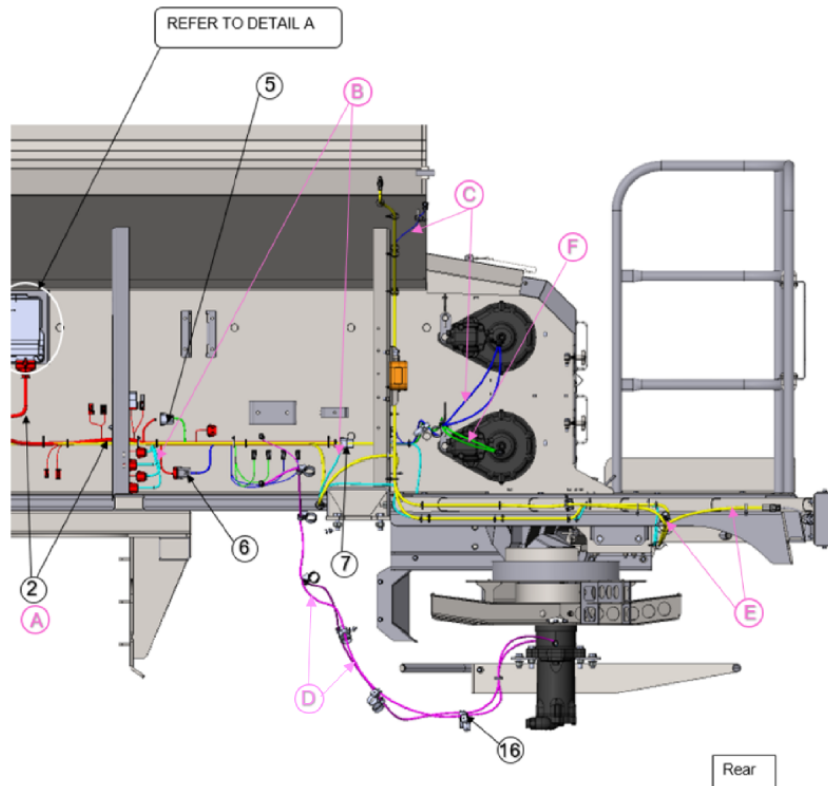
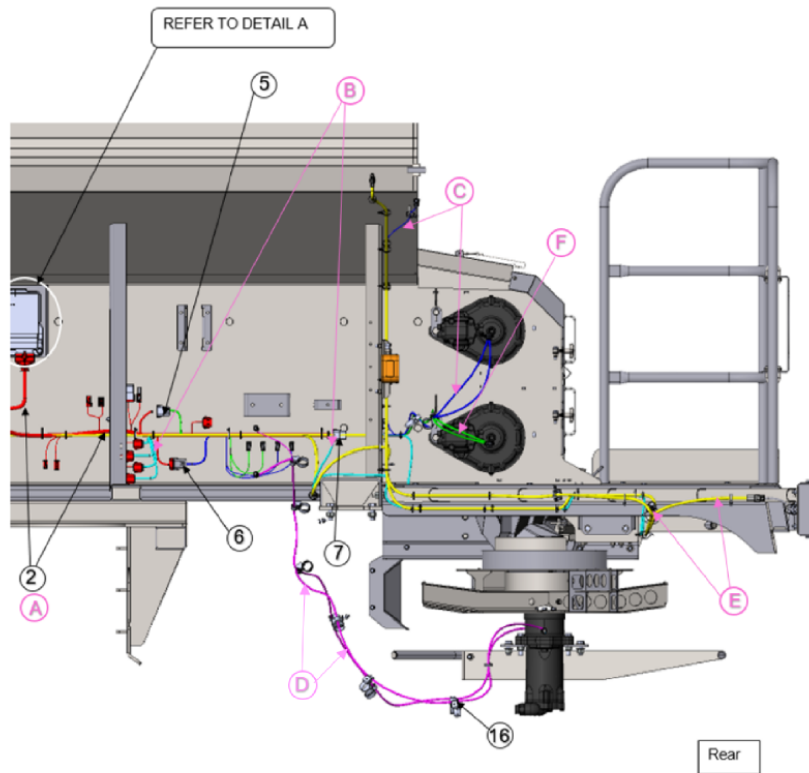


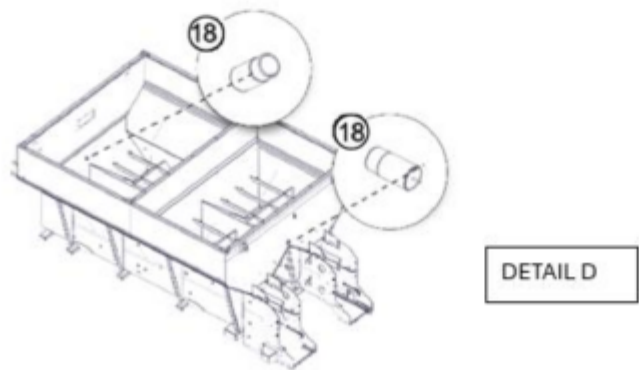
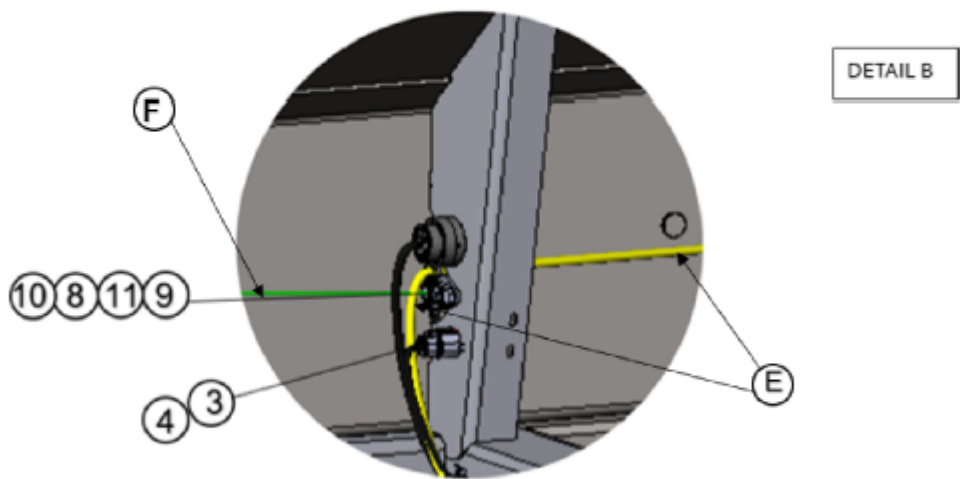
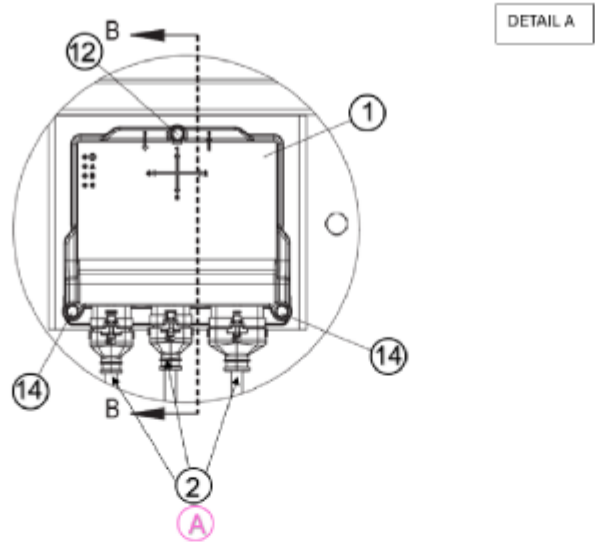
Key	Part No.	Description	Qty	Key	Part No.	Description	Qty
	321528	Motor - Assy Spinner		5	36402	Capscrew - .5-13NC X 1.25 SS	2
1	320879	Motor - Hyd 5CID	1	6	36422	Washer - .5 SS Lock	2
A	*320894	*Motor Seal Kit *Not shown*	1	7	300493	Gasket - Paper SAE B 2 Bolt	1
2	324176	Over Hung Load Adaptor - Assy	1	8	313450	Fitting - 12-12 520120	2
3	316587	Sensor - Gear Tooth	1	9	29875	O-Ring - 016	1
4	308227	Capscrew - .25-20NC X .625 SS	1	10	313455	Fitting - 6-6 520120	1

Electrical

Harnesses and Sensors







Part's list →

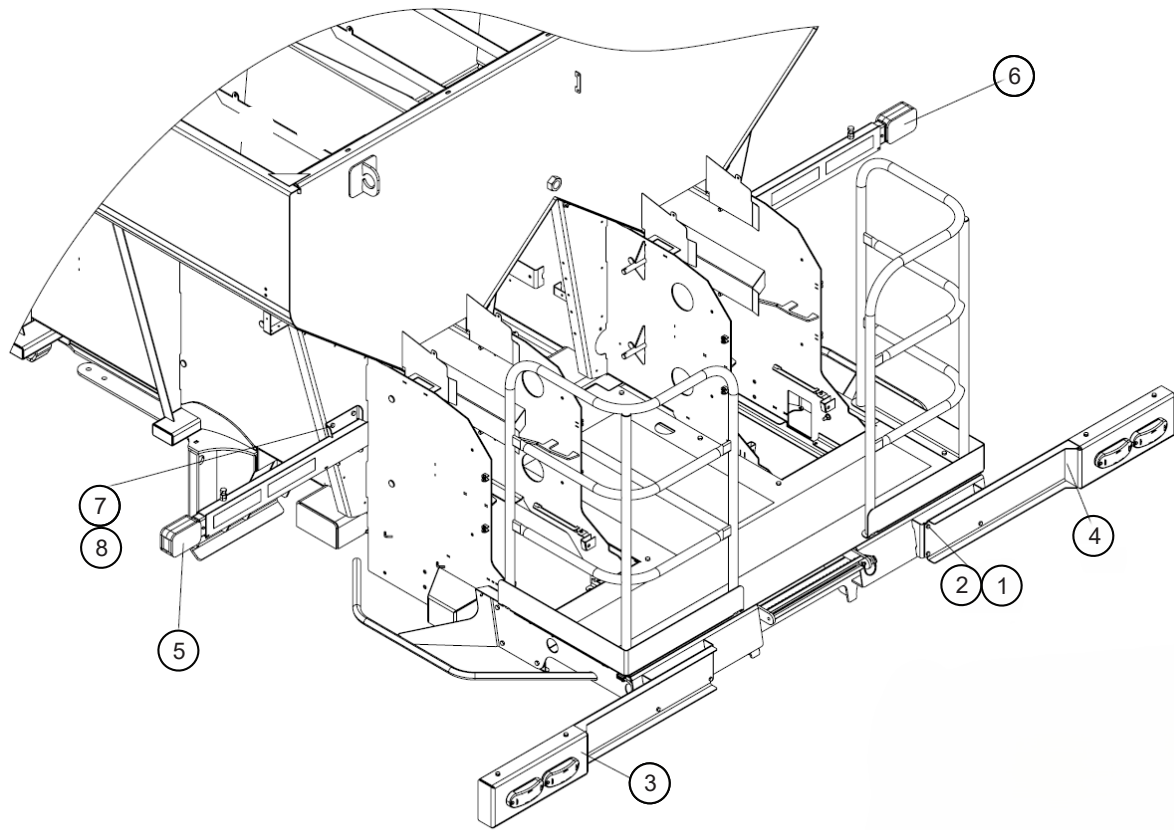
Key	Part No.	Description	Qty
1	322921	Controller - Raven RCM	1
2	324103	Harness - Hydraulic Pump	1
3	322915	Harness - Main	1
4	44483	Screw - Panhead Phlp # 10-24NC X .75 SS	2
5	56355	Nut - Lock #10-24NC SS	2
6	322916	Harness - Bin 1 Control 12'-14'	1
7	322917	Harness - Spinner	1
8	322919	Clip - Harness Mounting	4
9	34580	Capscrew - .313-18NC X 1 SS	4
10	36424	Washer - Flat .313 SS	4
11	42221	Nut - Lock .313-18NC SS	4
12	34501	Capscrew - .25-20NC X 2.5 SS	1
13	42034	Nut - Lock .25-20NC SS	3
14	36396	Capscrew - .25-20NC X 3 SS	2
15	99674	Tie - Wire	20
16	310648	Tie - Dual Clamp	12
17	311806	Tie - Wire Fir Tree	23

Harness list →

Key	Part No.	Description	Colors
A	322915	Main Harness	Red
B	322915	Chute Actuators	Teal
C	322917	Bin 2 Conveyors	Blue
D	322919	Spinners	Purple
E	**_	Lighting	Yellow
F	322916	Bin 1 Conveyors	Green

**See page 43-46 for part numbers.

Light Harness Group

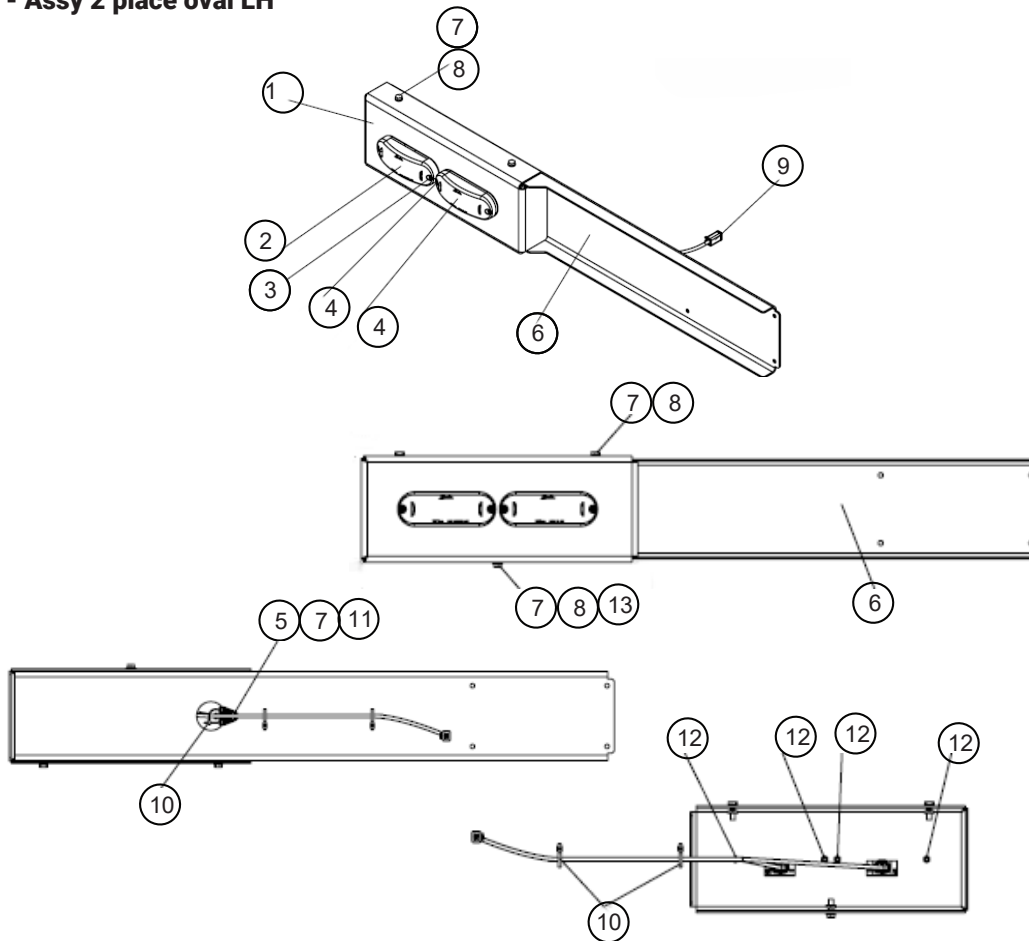


Key	NLM	Description	Qty
1	42221	Nut - Lock .313-18NC SS	8
2	56858	Capscrew - .313-18NC X .75 SS	8
3	323477	Light - Assy 2 place oval LH	1
4	323478	Light - Assy 2 place oval RH	1
5	322223	Bracket - Assy Warn Light LH 304	1
6	322224	Bracket - Assy Warn Light RH 304	1
7	36398	Capscrew - .375-16NC X 1 SS	6
8	72054	Nut - Lock .375-16NC SS	6

Nut - Lock .375-16NC SS

Light Harness Group - continued

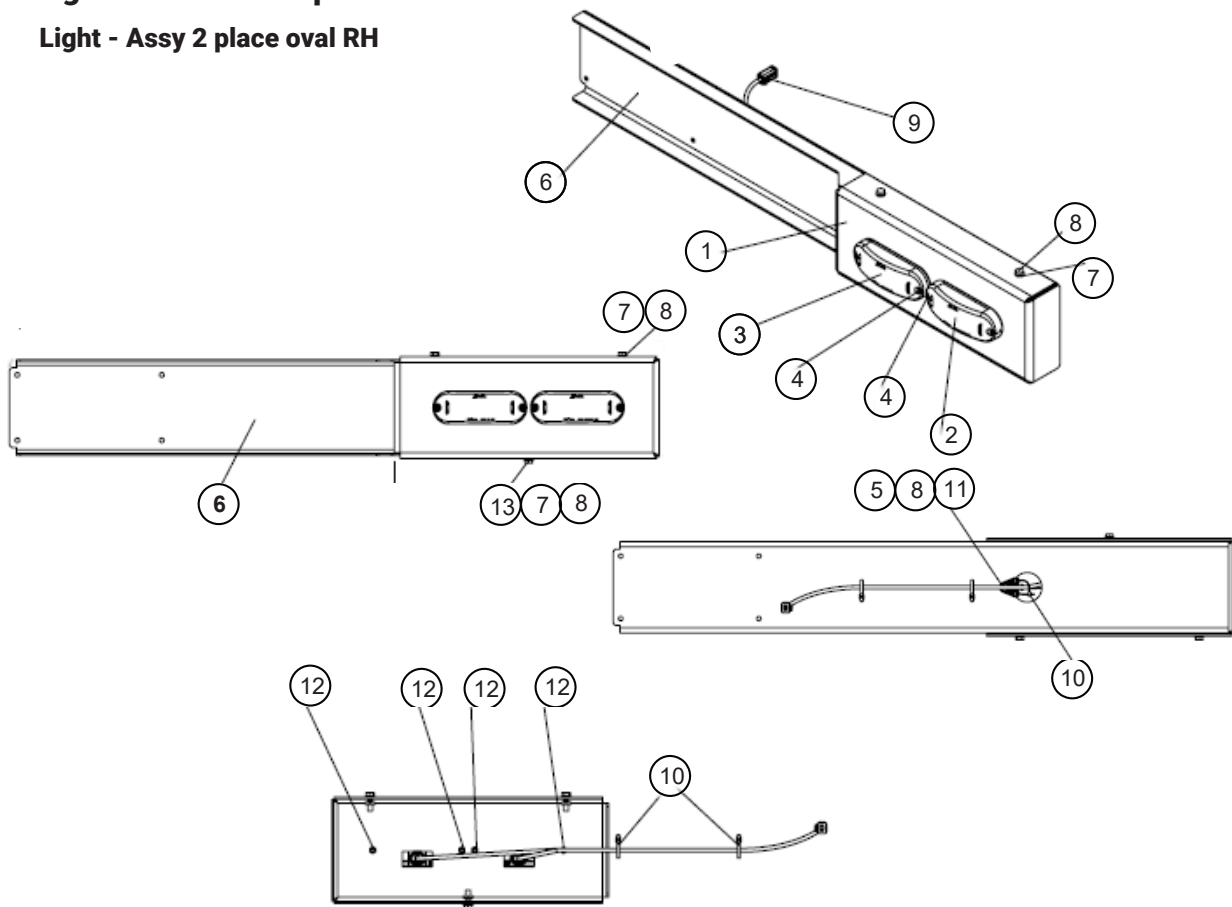
Light - Assy 2 place oval LH



Key	NLM	Description	Qty
1	323479	Panel - 2 Oval 304 LH	1
2	313931	Light - Stop Turn Tail	1
3	313932	Light - Turn	1
4	314026	Screw - Panhead #10-24NC X 1.25 SS	4
5	42221	Nut - Lock .313-18NC SS	1
6	323481	Bracket - Wldmt Light LH Back Panel 304	1
7	34580	Capscrew - .313-18NC X 1 SS	4
8	36419	Washer - Lock .313 SS	3
9	323513	Harness - Tail Light	1
10	99674	Tie - Wire	3
11	312964	Clip - Harness Mounting	1
12	56355	Nut - Lock #10-24NC SS	4
13	36424	Washer - Flat .313 SS	1

Light Harness Group - continued

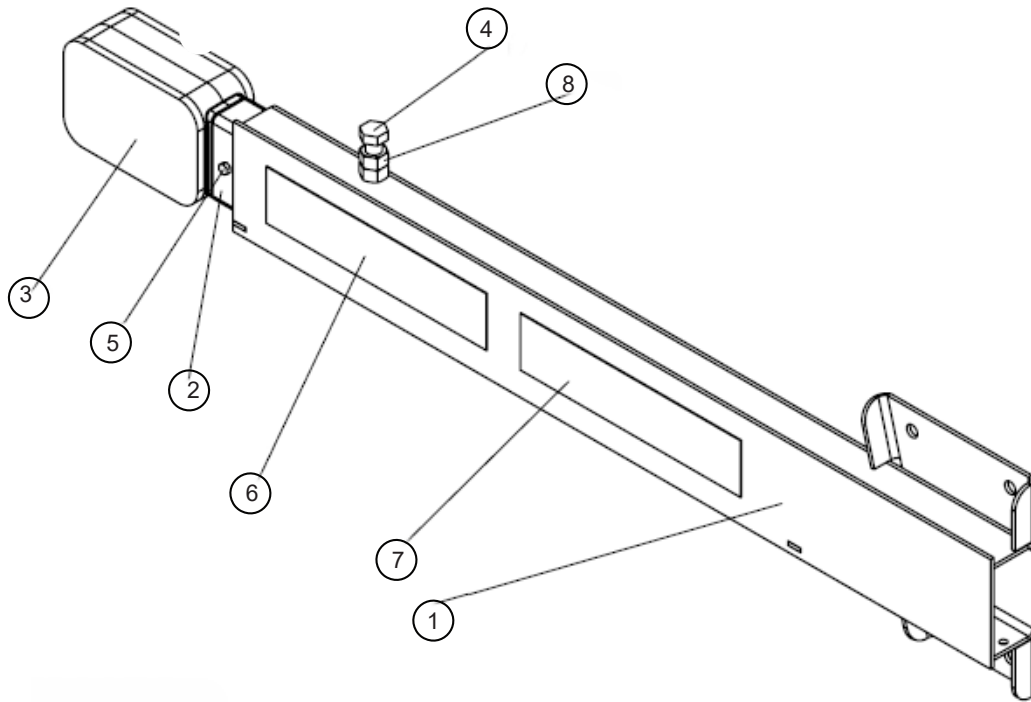
Light - Assy 2 place oval RH



Key	NLM	Description	Qty
1	323480	Panel - 2 Oval 304 RH	1
2	313931	Light - Stop Turn Tail	1
3	313932	Light - Turn	1
4	314026	Screw - Panhead #10-24NC X 1.25 SS	4
5	42221	Nut - Lock .313-18NC SS	1
6	323482	Bracket - Wldmt Light RH Back Panel 304	1
7	36419	Washer - Lock .313 SS	3
8	34580	Capscrew - .313-18NC X 1 SS	4
9	323513	Harness - Tail Light	1
10	99674	Tie - Wire	3
11	312964	Clip - Harness Mounting	1
12	56355	Nut - Lock #10-24NC SS	4
13	36424	Washer - Flat .313 SS	1

Light Harness Group - continued

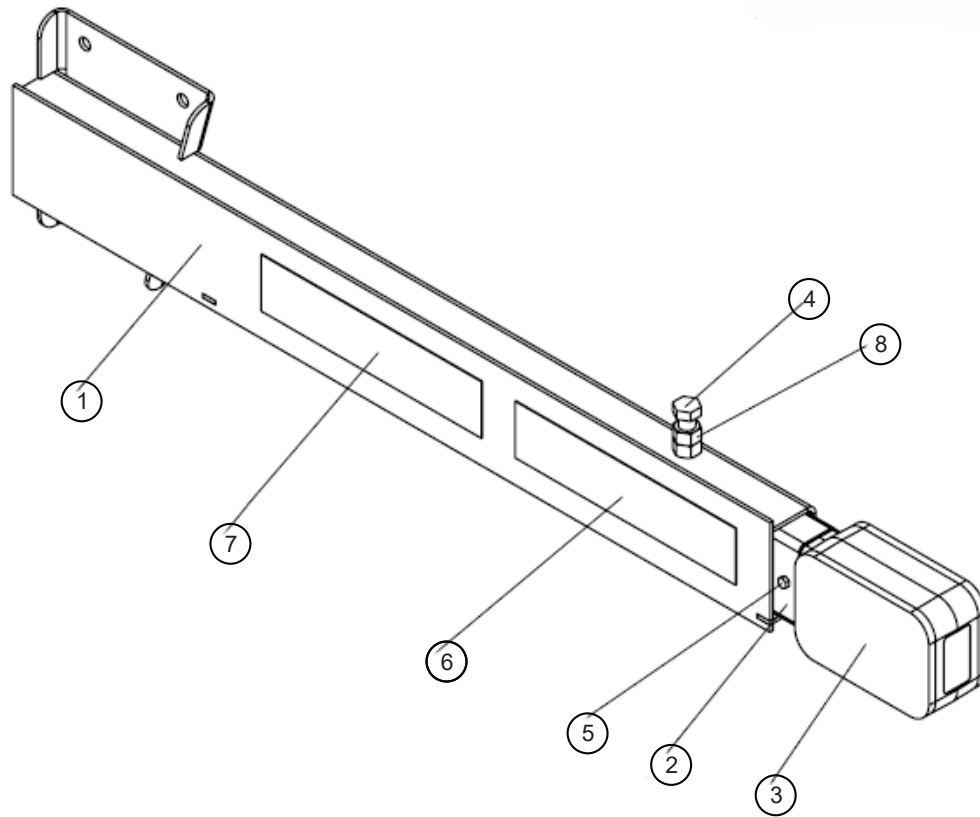
Light - Assy Warn Light LH



Key	NLM	Description	Qty
1	322221	Bracket - Wldmt Warn Light LH 304	1
2	313925	Tube - Tail Light 304	1
3	313933	Light - Marker	1
4	36539	Capscrew - .5-13NC X 1.5 SS	1
5	313934	Capscrew - M5 X 12 SS	2
6	323803	Tape - Red Reflective 2 X 9 Strip	1
7	306430	Tape - Orange Fluorescent 2" X 9" Strip	1
8	36416	Nut - Hex .5-13NC SS	1
9	311806	Tie - Wire Fir Tree	1

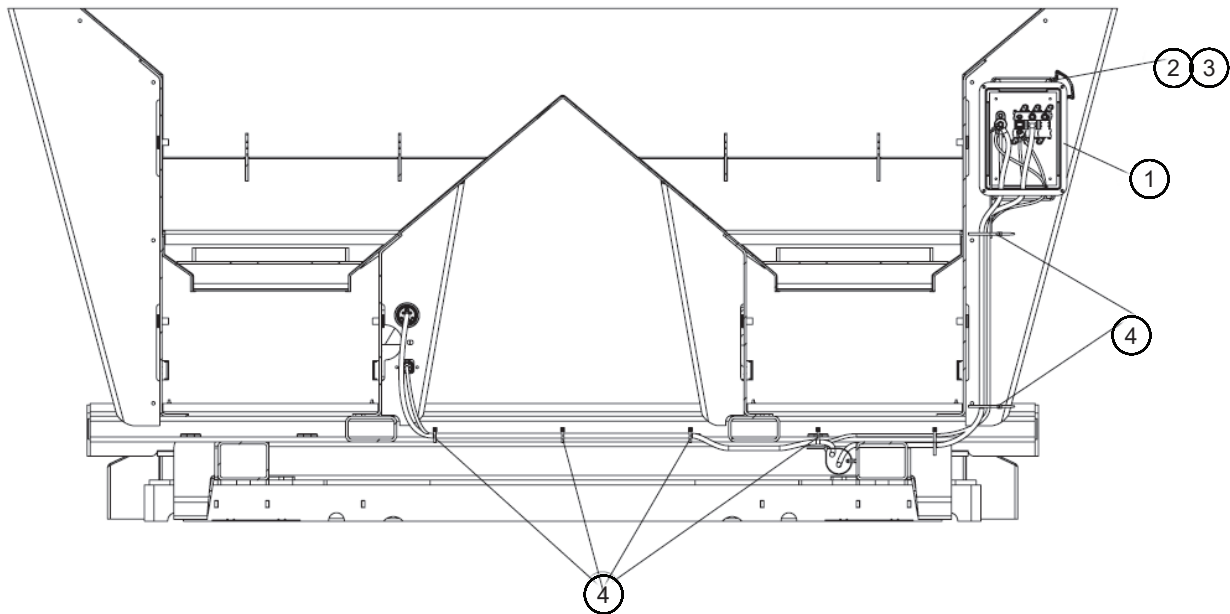
Light Harness Group - continued

Light - Assy Warn Light RH



Key	NLM	Description	Qty
1	322222	Bracket - Wldmt Warn Light RH 304	1
2	313925	Tube - Tail Light 304	1
3	313933	Light - Marker	1
4	36539	Capscrew - .5-13NC X 1.5 SS	1
5	313934	Capscrew - M5 X 12 SS	2
6	323803	Tape - Red Reflective 2 X 9 Strip	1
7	306430	Tape - Orange Fluorescent 2" X 9" Strip	1
8	36416	Nut - Hex .5-13NC SS	1
9	311806	Tie - Wire Fir Tree	1

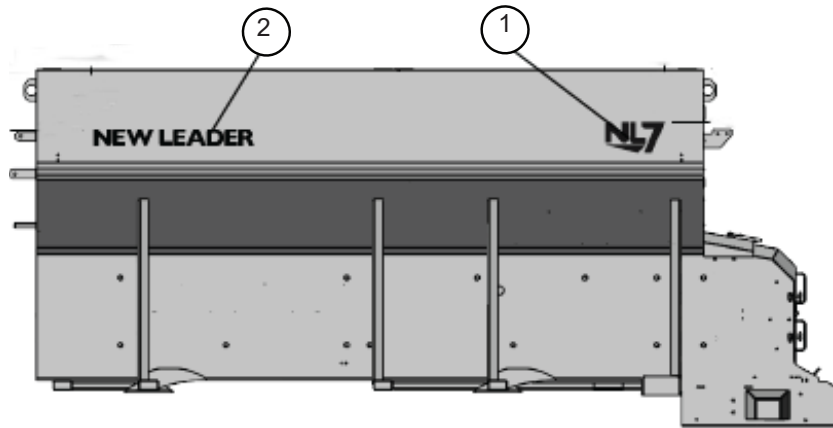
PDC/ISO - Group



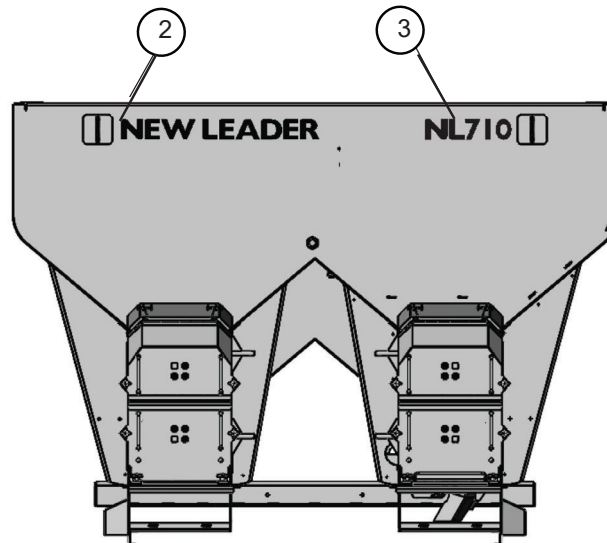
Key	Part No.	Description	Qty
1	323499	Harness- PDC/ISO	1
2	36394	Capscrew - .25-20NC X .875 SS	4
3	42034	Nut - Lock .25-20NC SS	4
4	99674	Tie - Wire	9

Decals

Decor Group

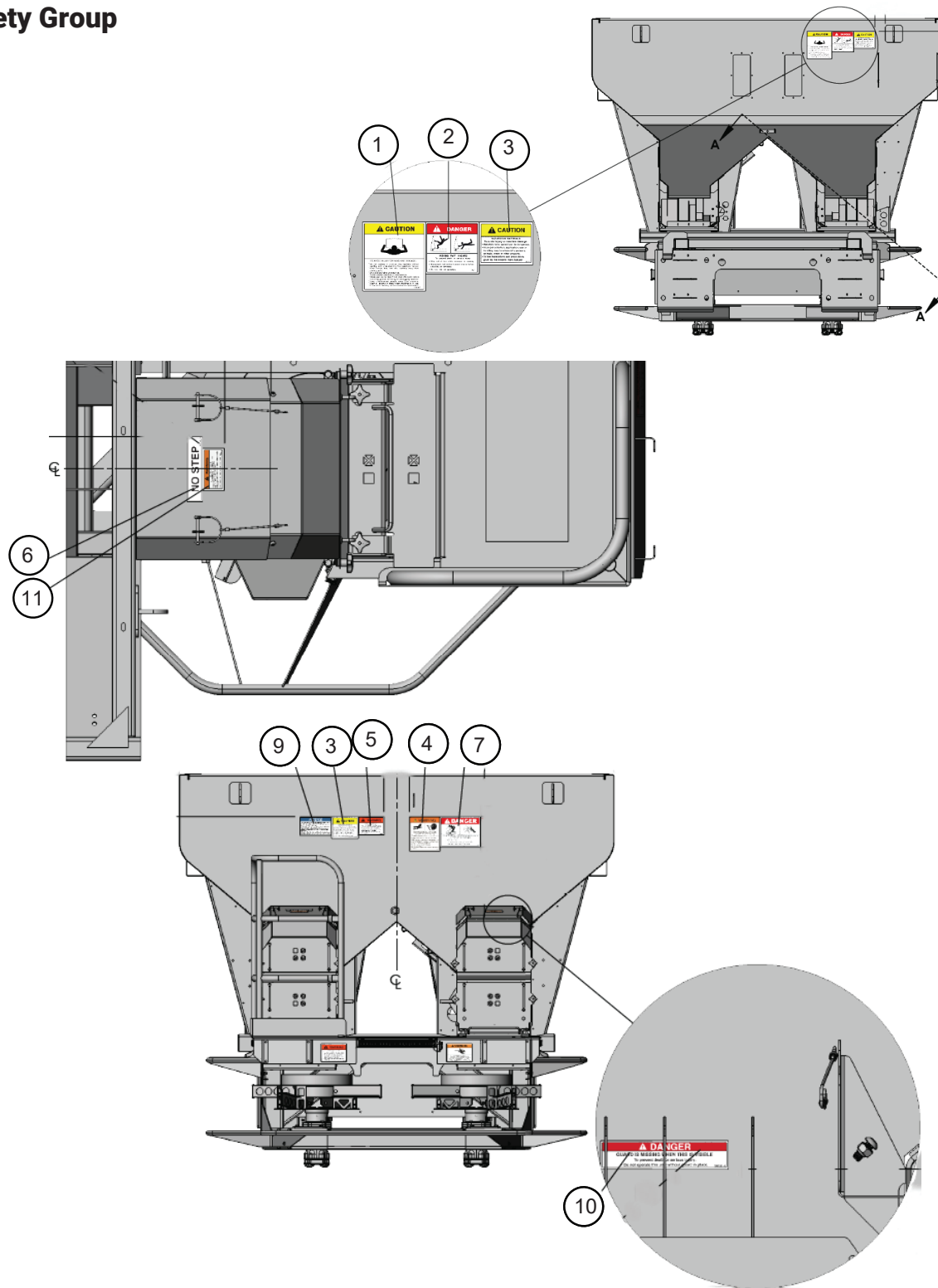


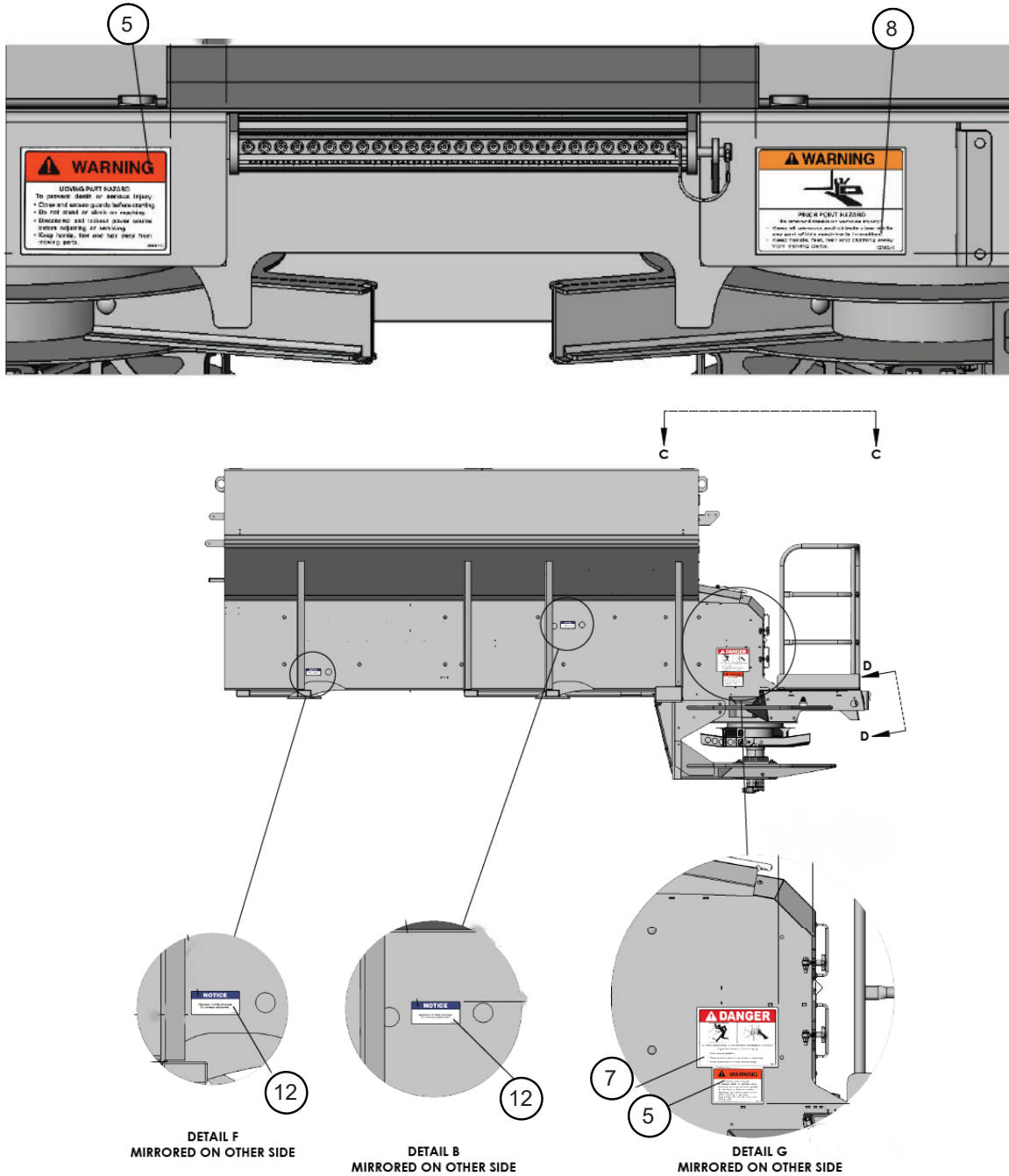
MIRRORED ON OTHER SIDE



Key	Part No.	Description	Qty	Key	Part No.	Description	Qty
	322278	Decal - Group Decor	1	2	322277	Decal - New Leader Black	3
1	322083	Decal - NL7 Black	2	3	322084	Decal - NL710 Black	1

Safety Group

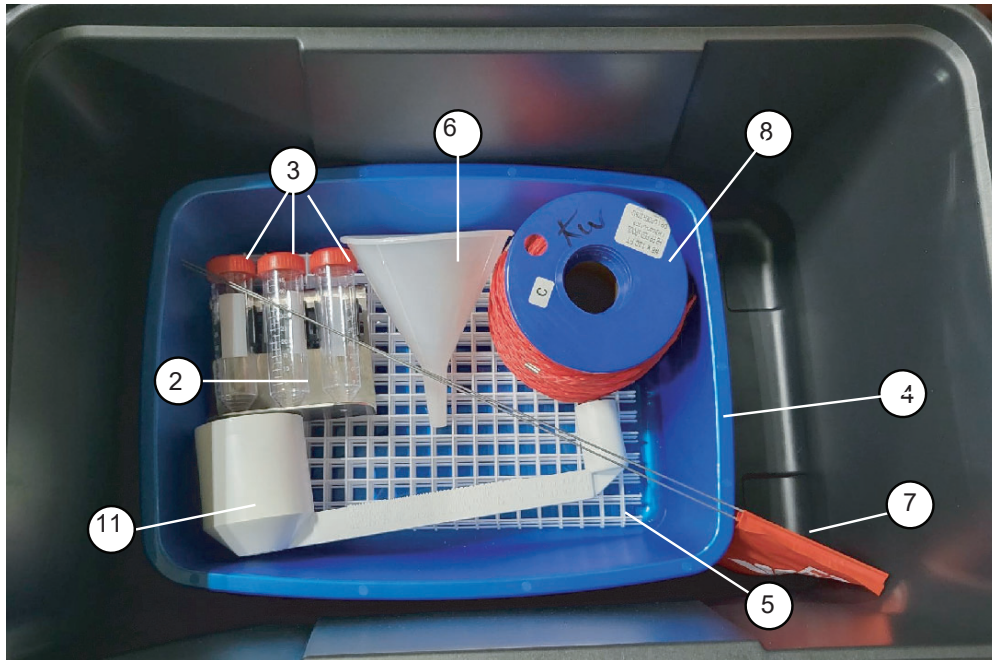




Key	Part No.	Description	Qty	Key	Part No.	Description	Qty
	321792	Decal - Safety		7	368	Decal - Flying PE High Density Film	3
1	150034	Decal - Caution Operation & Maint.	1	8	323632	Decal - Warning Moving Part Hazard	1
2	364	Decal - Danger Moving Part	1	9	312276	Decal - Notice Spread Pattern	1
3	321	Decal - Caution Hazardous Matl	2	10	308191	Decal - Guard is Missing	2
4	39138	Decal - Warning High Pressure Fluid	1	11	315641	Decal - Moving Part Hazard	2
5	55631	Decal - Warning Moving Part Hazard	4	12	325355	Decal - Notice Conveyor Adjustment	4
6	39017	Decal - No Step	4				

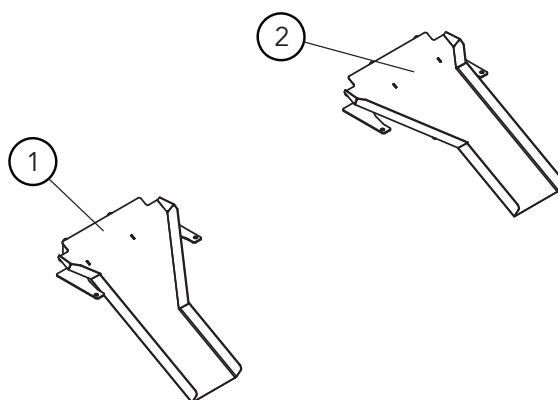
Calibration

Spread Pattern Test Kit



Key	Part No.	Description	Qty	Key	Part No.	Description	Qty
	323516	Test - Kit Spread Pattern	1	6	87332	Funnel	1
1	323517	Box - Plastic Storage	1	7	70897	Flag	2
2	323518	Assy - Test Tube Rack	1	8	323519	Rope - 120' Marked Red	1
3	300507	Test Tube	3	9	*87210	*Stake - Tent *Not Shown*	2
4	313963	Tray - Collection Blue	3	10	--	Not used	--
5	87200	Divider - 8.38 x 12.44	3	11	58897	Scale - Density	1
				12	323523	Decal - New Leader White/Red	2

Calibration Chutes



Key	Part No.	Description	Qty	Key	Part No.	Description	Qty
	323366	Chute - Kit Calibration	1	2	321830	Chute - Wldmt CFR RH 304	1
1	321831	Chute - Wldmt CFR LH 304	1				